



ENHANCE TART: BAYFRONT

TART BAYFRONT TRAIL IMPROVEMENT
AND EXTENSION



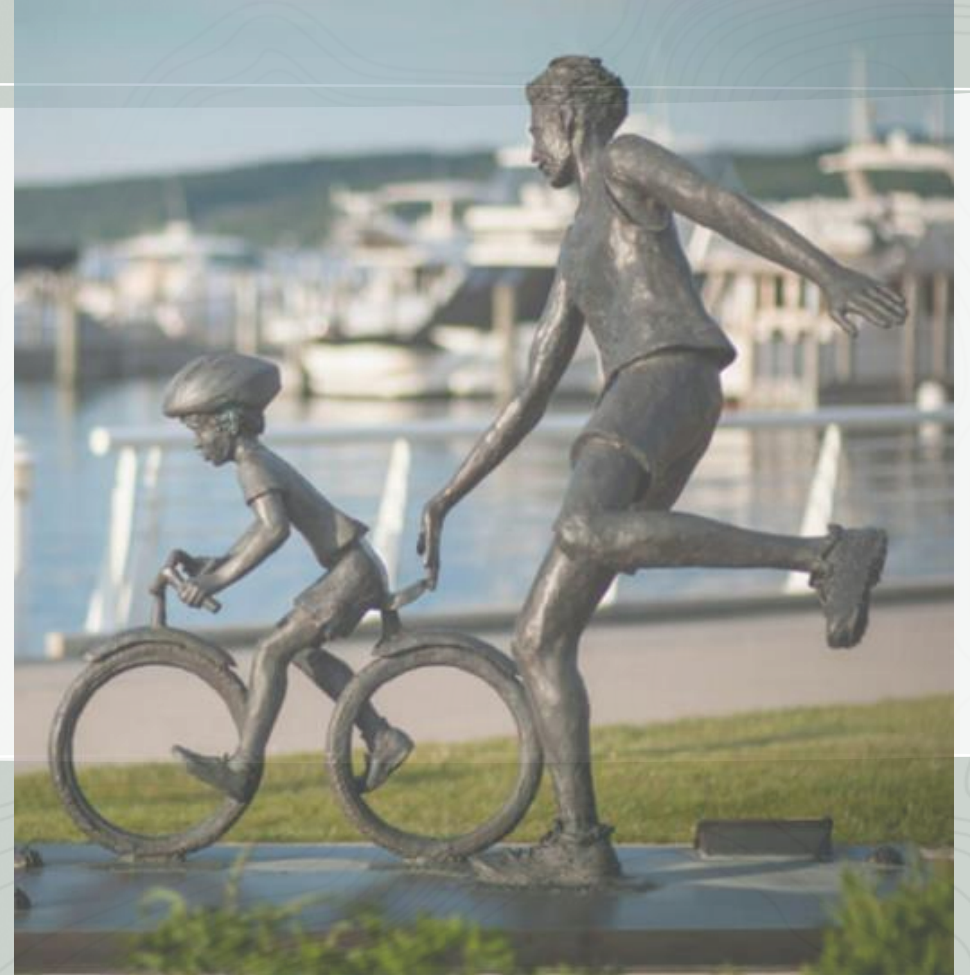
COMMUNITY EVENT 3



MEETING AGENDA

WELCOME !

1. **Welcome**
 - a. **Project Summary**
 - b. **Community Engagement Recap**
 - c. **Share March Engagement Findings**
2. **Refined Trail Plans along Peninsula Drive**
3. **Conclusion**
 - a. **Next Steps**



COMMUNITY ENGAGEMENT RECAP :

February 15th + 16th Community Event 1, we shared:

- Introduction of Project
- Shared Proposed Alignment Concepts
- Activity – Defining Alternatives + Identifying Enhancements



COMMUNITY ENGAGEMENT RECAP :

March 15th + 16th Community Event 2, we shared:

- **Project Summary**
- **Shared February Engagement Findings**
- **Shared Refined Trail Concepts**
- **Activity – Identifying Priorities + Metrics for Achievement**

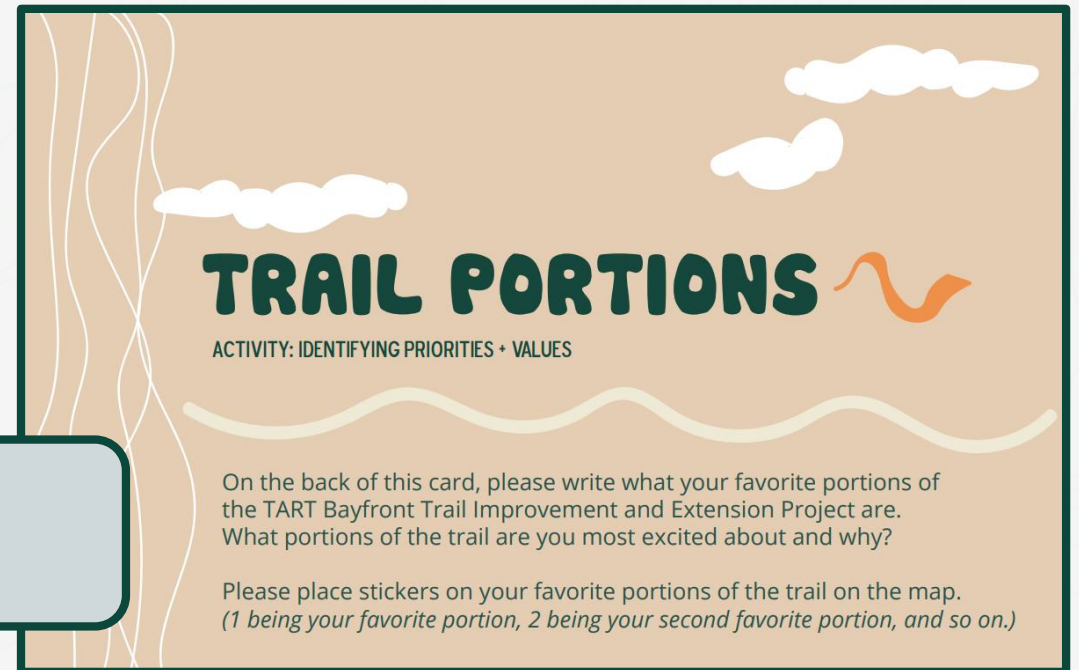


WHAT WE HEARD: TRAIL PORTIONS

When asking the public what **portions** of the trail are a priority to them, the following emerged as the most common:

- **Downtown Event**
 1. **Murchie Bridge to Senior Center Portion**
 2. **Senior Center to Peninsula Portion**
- **Peninsula Event**
 1. **Peninsula Portion**
 2. **Senior Center to Peninsula Portion**

**MURCHIE BRIDGE –
PENINSULA DRIVE**



WHAT WE HEARD: TRAIL PORTIONS

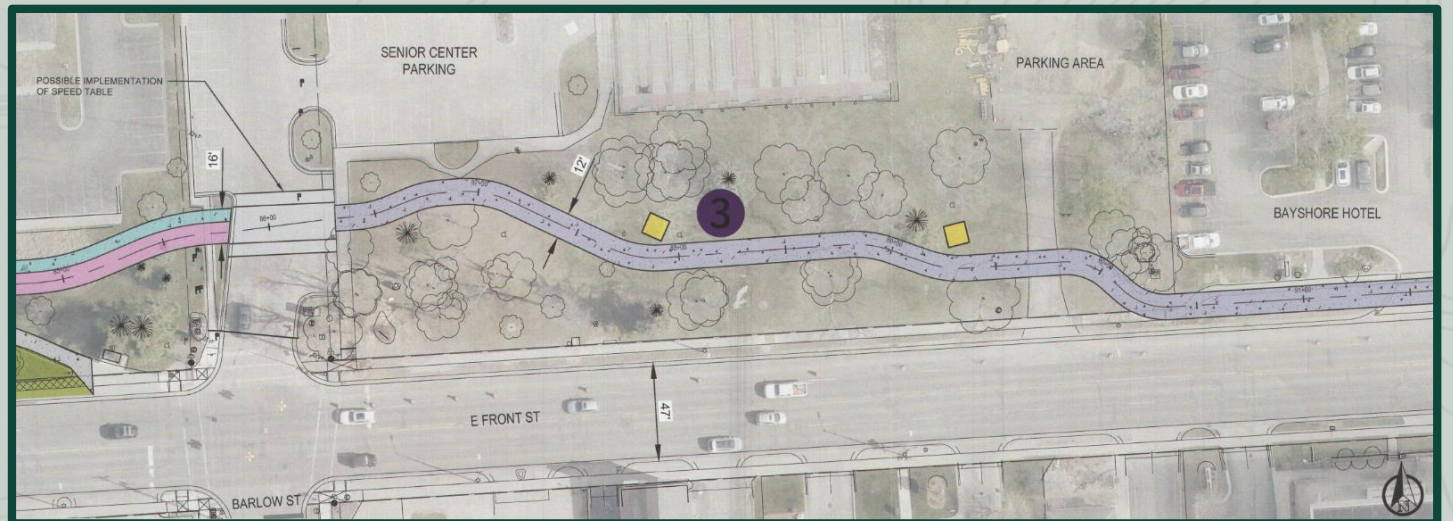
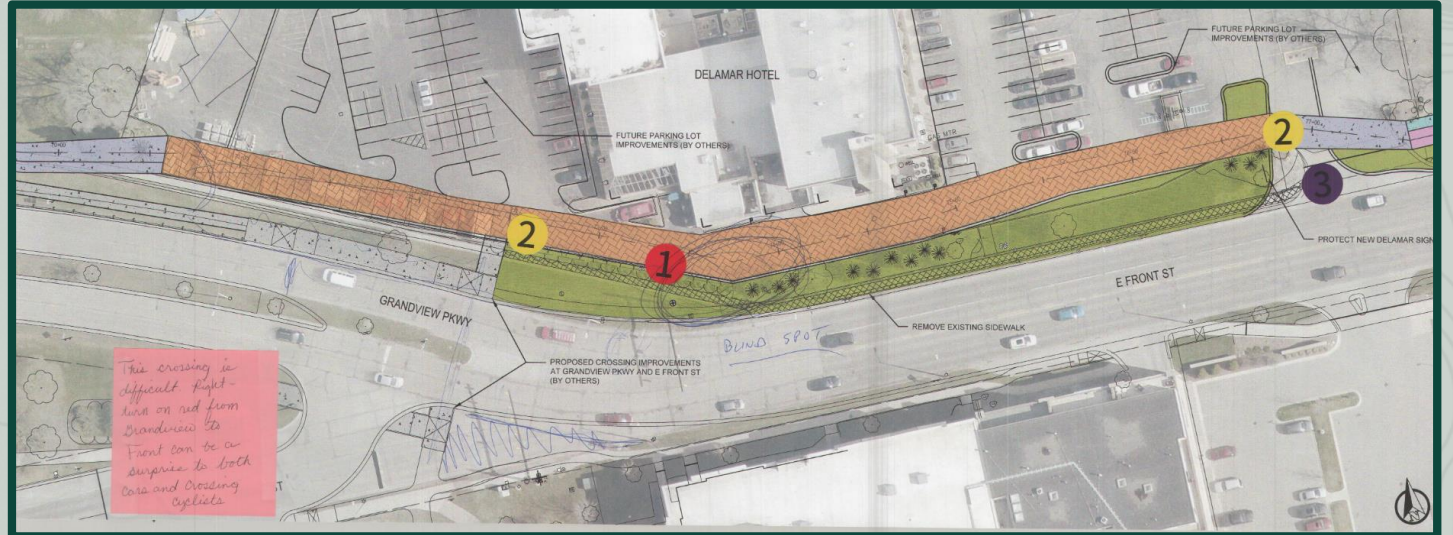
- 1 = Top Priority (Red/Orange Sticker)
- 2 = Second Priority (Yellow Sticker)
- 3 = Third Priority (Dark Purple Sticker)

**DIVISION TO
CLINCH PARK**

**CLINCH PARK
TO MURCHIE
BRIDGE**

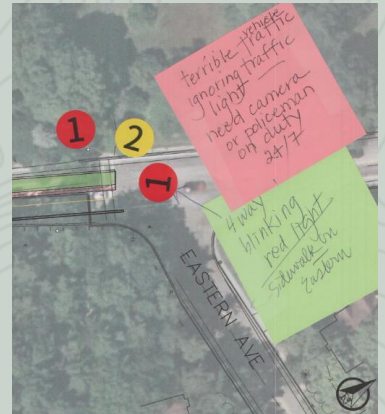
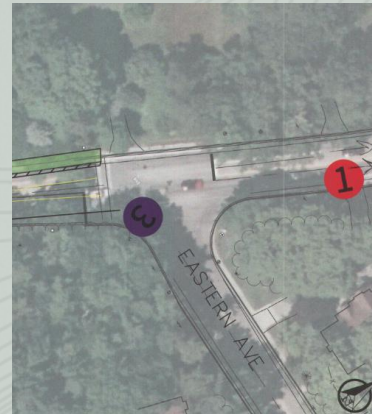
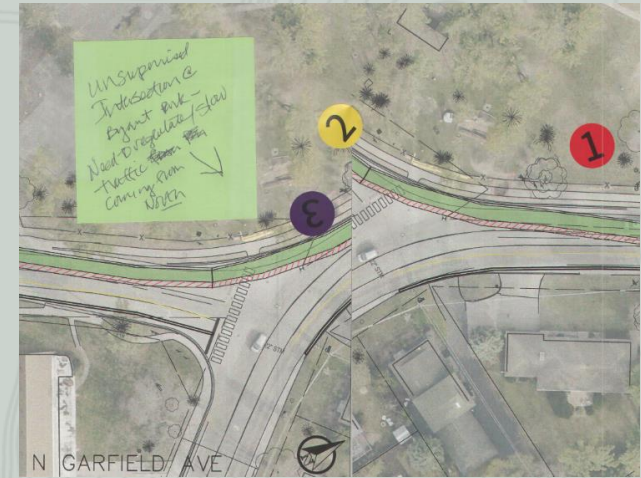
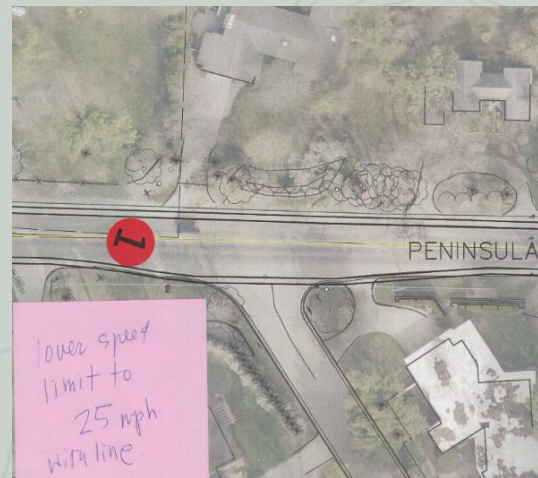
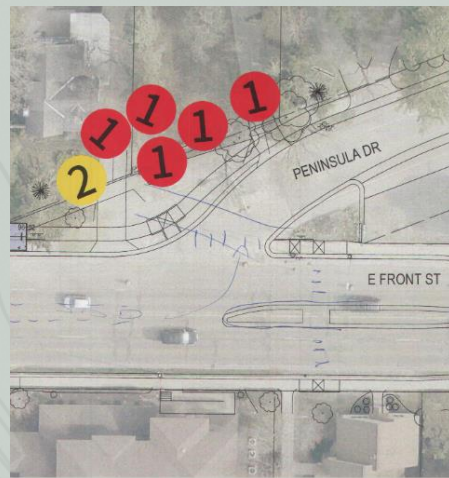
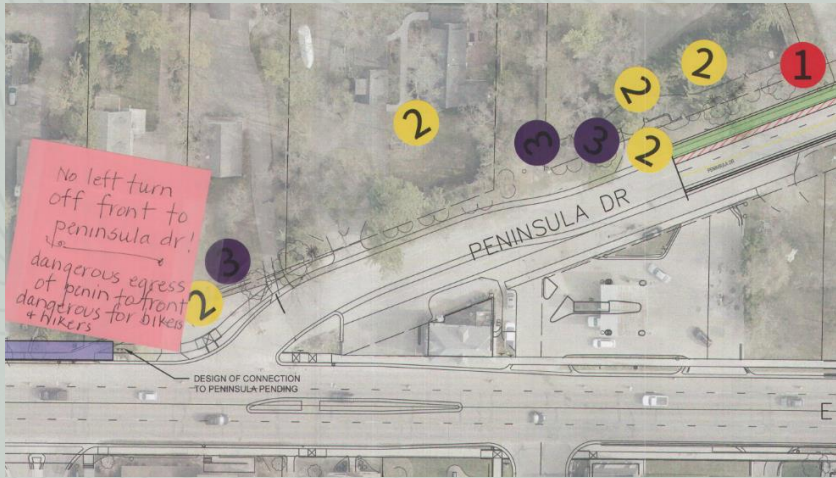
**MURCHIE
BRIDGE TO
SENIOR
CENTER**

**SENIOR
CENTER TO
PENINSULA
DRIVE**



WHAT WE HEARD: TRAIL PORTIONS

PENINSULA DRIVE



WHAT WE HEARD: TRAIL FEATURES

When asking the public what **FEATURES** are the most important to them, the following emerged as the most common across the Virtual, Downtown, and Peninsula Events:

1. WAYFINDING
2. NATIVE PLANTS
3. ACCESSIBILITY
4. TRASH/RECYCLING
5. WATER REFILL STATIONS

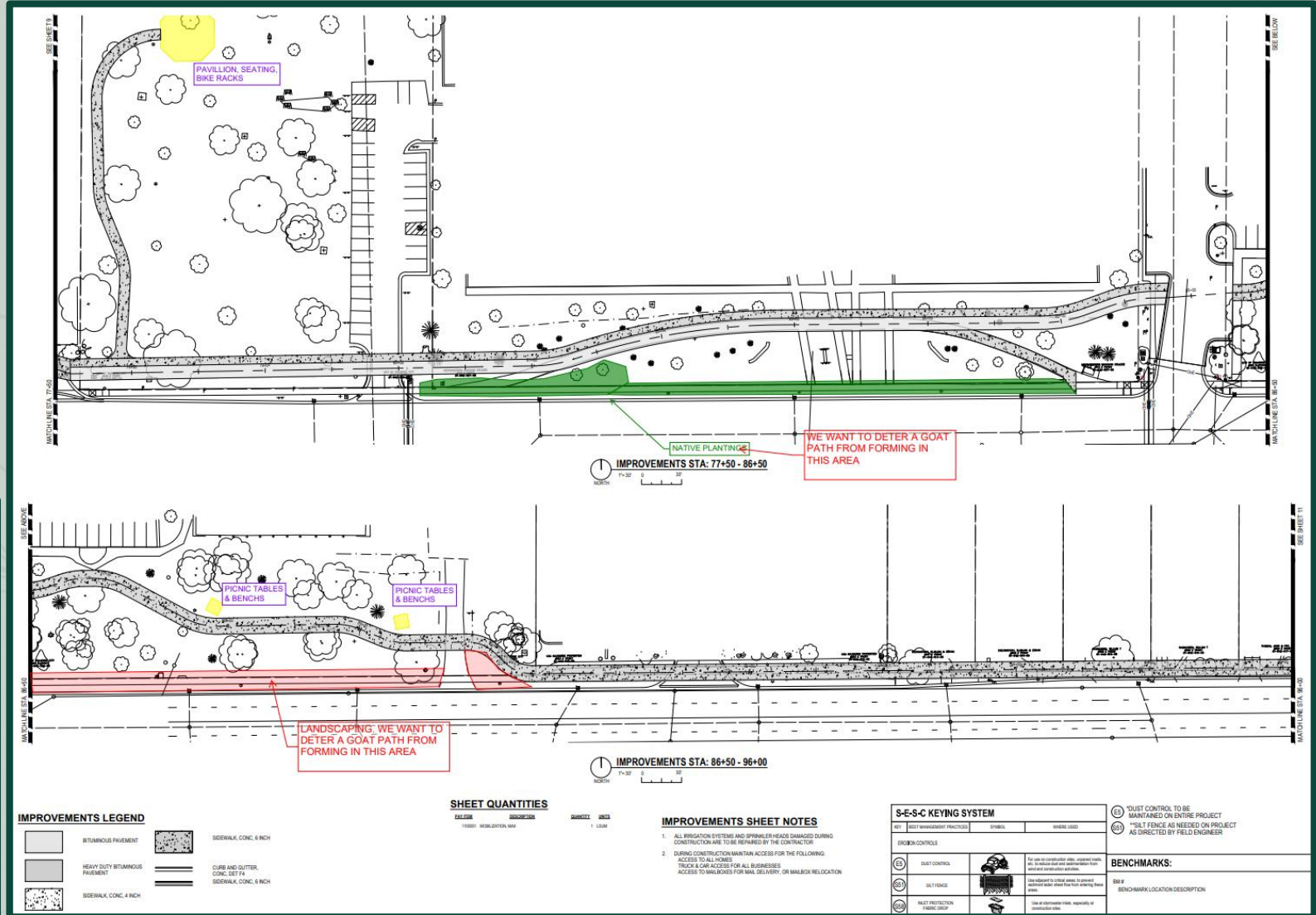
TRAIL FEATURES

ACTIVITY: IDENTIFYING PRIORITIES + VALUES

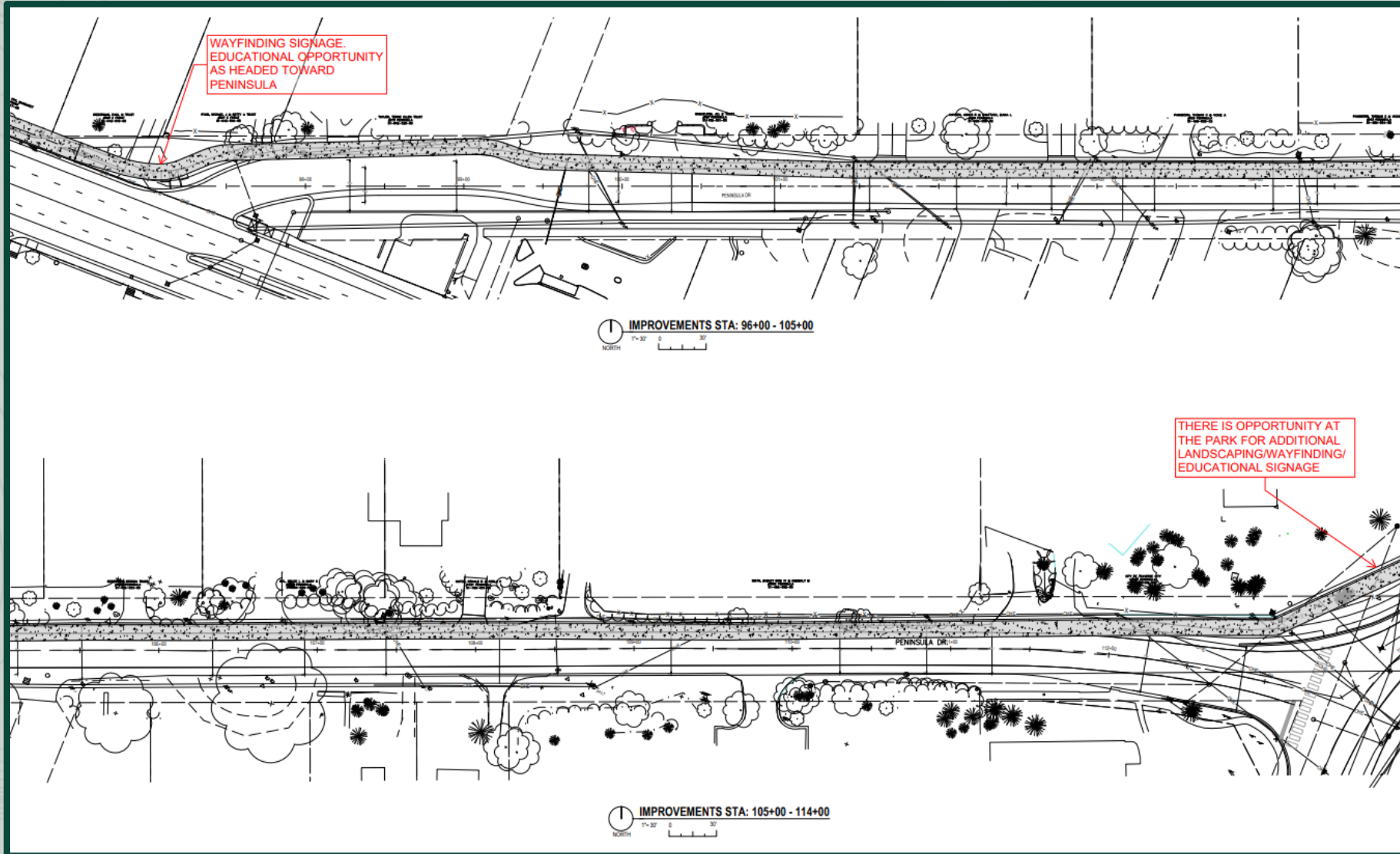
On the back of this card, please rate the features on a scale of 1 - 10 based on their *importance* to you.

(1 = not important at all, 10 = extremely important)

AMENITY LOCATIONS & IDEAS : SUNSET PARK & SENIOR



AMENITY LOCATIONS + IDEAS: PENINSULA



KEY DESIGN DECISIONS

Values We Heard:

1. SAFETY
2. ACCESSIBILITY
3. CONNECTIONS

Informed Design:

1. Separated Trail
2. Traffic Calming Measures
 - a) Curb and Gutter Road Design
 - b) Narrow Travel Lanes (10-foot-wide)
3. Creating access to Old Mission Peninsula
4. Connectivity -
 - a) Bryant Park
 - b) Traverse City Central High School
 - c) Eastern Elementary School

KEY DESIGN OBJECTIVES

1. Enhance Residential Road Experience
2. Create Separated Trail
3. Provide Watermain Upgrades
4. Stormwater Management



DESIGN IMPACTS

Bay Side:

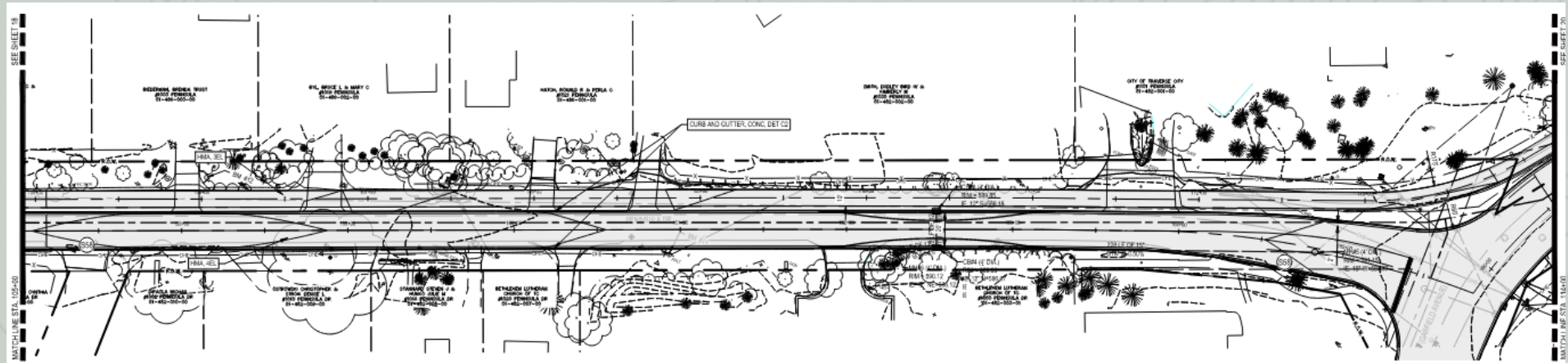
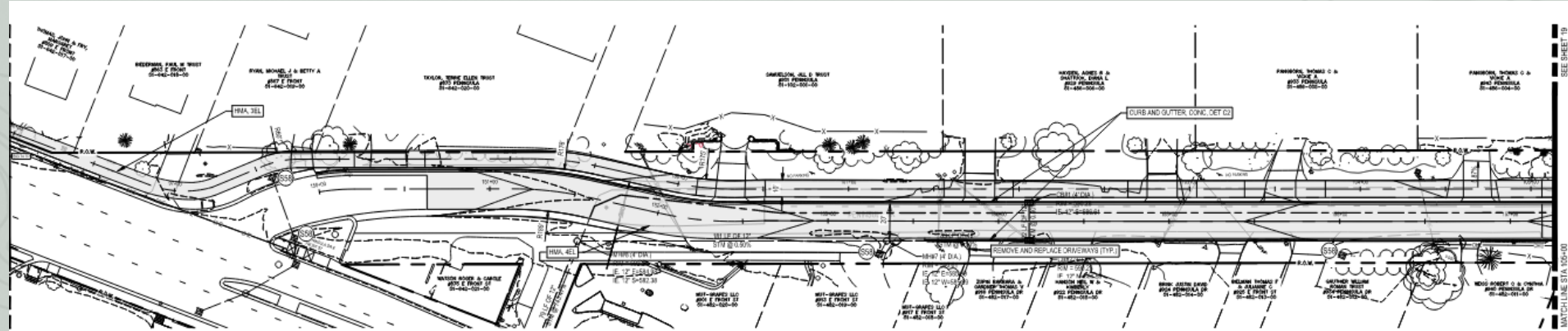
1. Driveway Extensions
2. Landscaping and Trees
3. Removal of On-Street Parking
4. Addition of 10-foot wide Trail
5. Relocation of Mailboxes

South Side:

1. Driveways
2. Trees
3. Shifting Road South
4. Removal of On-Street Parking
5. Relocation of Mailboxes

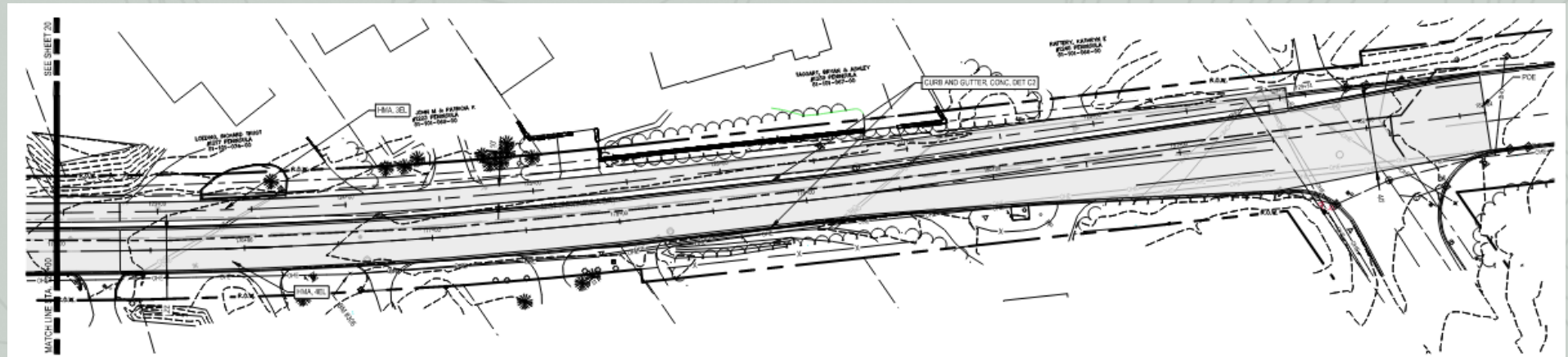
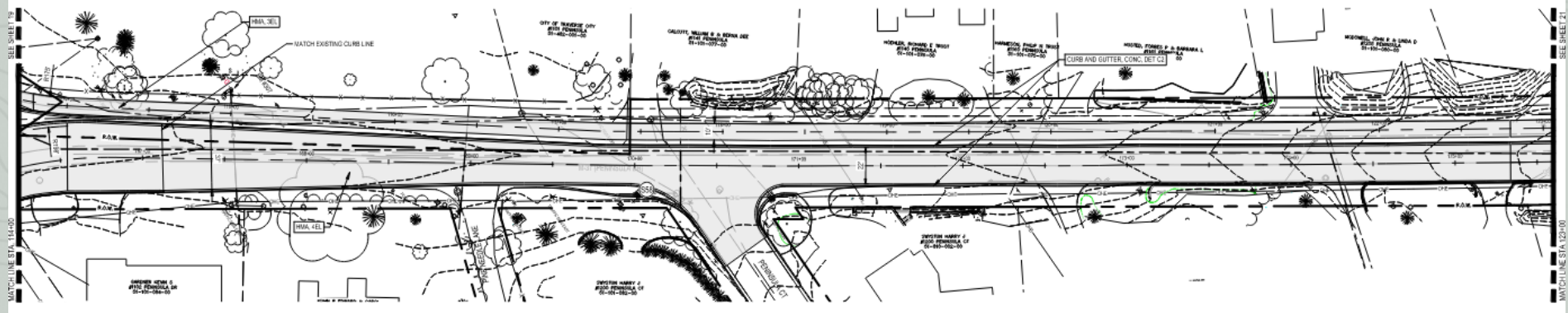
REFINED TRAIL:

- Peninsula Drive
- Shared Use Pathway (10' wide)
- Road Reconstruct
- Watermain Improvements
- Stormwater Management
- Work completed in Right-of-Way between Overhead Utilities



REFINED TRAIL:

- Peninsula Drive
- Shared Use Pathway (10' wide)
- Road Reconstruct
- Watermain Improvements
- Stormwater Management
- Work completed in Right-of-Way between Overhead Utilities



CONCLUSION

- 1. Complete Plans**
- 2. Submit Grant Applications**
- 3. Determine Phased Construction Approach**
- 4. Build**





THANK YOU!

**YOUR INVOLVEMENT +
FEEDBACK IS VALUED.**

