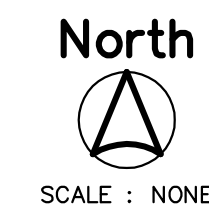
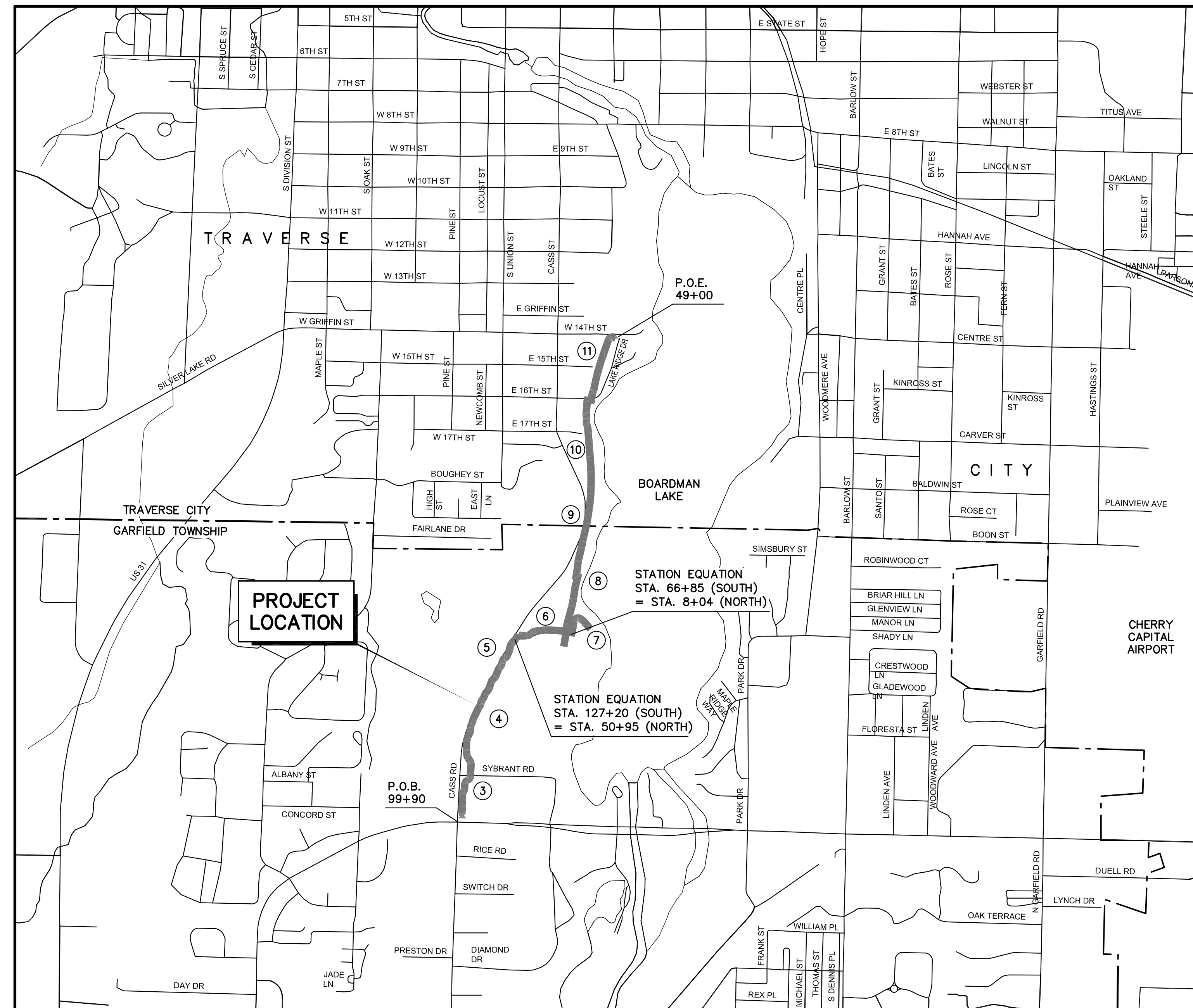


CITY OF TRAVERSE CITY IN COOPERATION WITH GRAND TRAVERSE COUNTY GARFIELD TOWNSHIP AND TART TRAILS WEST BOARDMAN LAKE TRAIL LOOP

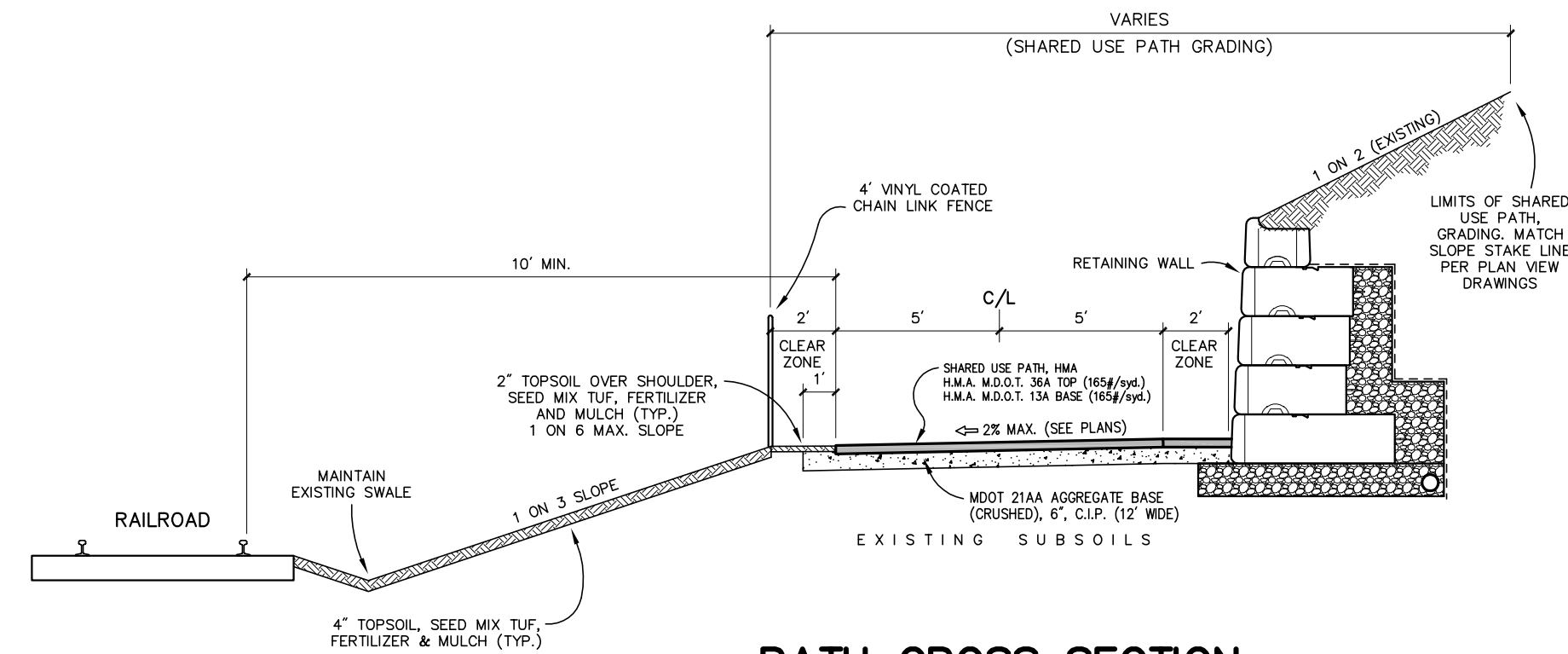
**JOB NUMBER :
CONTROL SECTION :**

SOIL BORING GENERAL NOTES	
<p>WITHIN EACH SOIL BORING, SOIL SAMPLES WERE OBTAINED BY THE STANDARD PENETRATION TEST METHOD, ASTM D1586, WHEREBY A SPLIT-SPOON SAMPLER IS DRIVEN THREE SUCCESSIVE 6-INCH INCREMENTS WITH A 140 POUND WEIGHT FALLING 30 INCHES. THE NUMBER OF BLOWS REQUIRED TO DRIVE THE SAMPLER FOR EACH INCREMENT IS PRESENTED ON THE SOIL BORING LOGS.</p> <p>THE SOIL BORING LOGS SHOWN ON THE CONSTRUCTION PLANS ARE BEING FURNISHED FOR YOUR CONVENIENCE AND GENERAL INFORMATION ONLY. THE DATA SHOWN ON THE BORING LOGS REPRESENTS SOIL AND GROUNDWATER CONDITIONS ENCOUNTERED AT THE RESPECTIVE BORING LOCATIONS. VARIATIONS MAY OCCUR BETWEEN THESE LOCATIONS. ADDITIONALLY, THE STRATIGRAPHIC LINES REPRESENT THE APPROXIMATE BOUNDARIES BETWEEN SOIL TYPES; HOWEVER, THE TRANSITION MAY BE MORE GRADUAL THAN WHAT IS SHOWN. FURTHERMORE, GROUNDWATER LEVELS CAN FLUCTUATE WITH SEASONAL VARIATIONS AND FOLLOWING PERIODS OF PROLONGED PRECIPITATION. THE BIDDER WILL BE RESPONSIBLE FOR MAKING HIMSELF FAMILIAR WITH SUBSURFACE CONDITIONS BY WHATEVER MEANS HE DEEMS NECESSARY AND SHALL MAKE HIS OWN DETERMINATIONS THEREFROM.</p> <p>THE BIDDER BY SUBMITTING A BID, WAIVES ALL CLAIM FOR DAMAGES WHICH HE MAY SUFFER BY REASONS OF THE INADEQUACIES OR DISCREPANCIES OF THE INFORMATION SHOWN ON THESE SOIL BORING LOGS AND UNDERSTANDS THAT NO COMPENSATION WILL BE PAID TO HIM DUE TO AN INADEQUACY OR DISCREPANCY IN THIS DATA.</p>	
GENERAL NOTES	
<p>THE IMPROVEMENTS COVERED BY THESE PLANS SHALL BE DONE IN ACCORDANCE WITH THE MICHIGAN DEPARTMENT OF TRANSPORTATION 2012 STANDARD SPECIFICATIONS AND SUPPLEMENTAL SPECIFICATIONS, THE 2011 MICHIGAN MANUAL FOR UNIFORM TRAFFIC CONTROL DEVICES AND THE AASHTO 2012 GUIDE FOR THE DEVELOPMENT OF BICYCLE FACILITIES.</p>	
STANDARD PLANS & SPECIAL DETAILS	
DRAINAGE STRUCTURES	R-1-C *
COVER B	R-7-F
COVER K	R-15-F
SIDEWALK RAMP AND DETECTABLE WARNING DETAILS	R-28-I
DRIVEWAY OPENINGS & APPROACHES AND CONCRETE SIDEWALKS	R-29-I
CONCRETE CURB AND CONCRETE CURB & GUTTER	R-30-G
UTILITY TRENCHES	R-83-C *
PRECAST CONCRETE END SECTION FOR PIPE CULVERT	R-86-E
SOIL EROSION & SEDIMENTATION CONTROL MEASURES	R-96-E
SEEDING & TREE PLANTING	R-100-H
* SPECIAL DETAIL	
TRAFFIC & SAFETY STANDARD PLANS	
GROUND DRIVEN SIGN SUPPORTS FOR TEMP SIGNS	WZD-100-A
TEMPORARY TRAFFIC CONTROL DEVICES	WZD-125-E
SAND MODULE IMPACT ATTENUATOR (TEMPORARY)	WZD-175-A
UTILITIES	
<p>CITY OF TRAVERSE CITY ENGINEERING DEPARTMENT 400 BOARDMAN AVENUE TRAVERSE CITY, MI TIMOTHY J. LODGE (231) 922-4460</p> <p>TRAVERSE CITY LIGHT AND POWER 1131 HASTINGS STREET TRAVERSE CITY, MI TONY CHARTRAND (231) 934-4544</p> <p>TRAVERSE CITY SOIL EROSION & SEDIMENTATION CONTROL 400 BOARDMAN AVENUE TRAVERSE CITY, MI JOHN MCWEATHY (231) 922-4467</p> <p>CONSUMERS ENERGY COMPANY 821 HASTINGS STREET TRAVERSE CITY, MI CURTIS HANSEN (800) 477-5050</p> <p>AT&T 142 E. STATE STREET TRAVERSE CITY, MI KATHY DOHM-BEISSER (231) 941-2707</p> <p>DTE ENERGY 1250 MICHON LANE, S.W. P.O. BOX 279 KALKASKA, MI MATTHEW LOGAN (231) 258-3785 EMERGENCY LEAK RESPONSE: (800) 947-5000</p>	<p>TRAVERSE CITY D.P.W. 507 HANNAH AVENUE TRAVERSE CITY, MI JUSTIN ROY (231) 922-4923</p> <p>MICHIGAN DEPARTMENT OF TRANSPORTATION (M.D.O.T.) TRAVERSE CITY TSC 2084 US-31 SOUTH TRAVERSE CITY, MI DAVE FAX (231) 941-1988</p> <p>CHARTER COMMUNICATION 1392 TRADE CENTRE DRIVE TRAVERSE CITY, MI KEVIN MORRISON (231) 932-8140</p> <p>POLICE AGENCIES EMERGENCY CALLS : 911 CITY OF TRAVERSE CITY : (231) 995-5150 MICHIGAN STATE POLICE : (231) 946-4646 GRAND TRAVERSE COUNTY SHERIFF : (231) 922-4500</p> <p>FIRE DEPARTMENTS EMERGENCY CALLS : 911 CITY OF TRAVERSE CITY : (231) 922-4930</p> <p>AMBULANCE EMERGENCY CALLS : 911</p>



SITE LOCATION MAP	
<p style="text-align: center;">GRAND TRAVERSE COUNTY, MICHIGAN</p>	
PLAN INDEX	
SHEET No.	DESCRIPTION
1	COVER SHEET
2	TYPICAL CROSS SECTIONS & DETAILS
3	CASS ROAD (STA. 99+00 TO STA. 109+00)
4	CASS ROAD (STA. 109+00 TO STA. 119+00)
5	CASS ROAD (STA. 119+00 TO STA. 128+00)
6	DENDRINOS DRIVE (STA. 59+00 TO STA. 68+00)
7	TRAIL SPUR
8	M.D.O.T. R.R. R.O.W. (STA. 7+00 TO STA. 18+00)
9	M.D.O.T. R.R. R.O.W. (STA. 18+00 TO STA. 29+00)
10	M.D.O.T. R.R. R.O.W. (STA. 29+00 TO STA. 40+00)
11	M.D.O.T. R.R. R.O.W. (STA. 40+00 TO END)
12	OVERALL LANDSCAPE PLAN
13	LANDSCAPE AND AMENITIES PLAN
14	STAIR DETAILS
15	FISHING DECK DETAILS
16	QUANTITIES
PROJECT LENGTH	
NON MOTORIZED PATHWAY	XXX MI.
<p>CONTRACT FOR: NON-MOTORIZED PATHWAY CONSTRUCTION INCLUDING EARTHWORK, CONCRETE AND HMA PAVEMENT, CONCRETE CURB & GUTTER, STORM SEWER, SIDEWALK RAMP, PAVEMENT MARKINGS, AND RESTORATION IN GRAND TRAVERSE COUNTY, MICHIGAN</p>	
MUNICIPAL APPROVAL	
<p>_____ TIM LODGE, P.E. CITY ENGINEER</p>	<p>_____ DATE</p>
PREPARED UNDER SUPERVISION OF	
<p>_____ SCOTT T. POST, P.E.</p>	<p>46243 REGISTRATION NO.</p>
<p>ORGANIZATION PREIN & NEWHOF, INC.</p>	
<p>3355 EVERGREEN DRIVE GRAND RAPIDS, MI 49525 ADDRESS</p>	
<p>PROJECT NO. 2170259</p> <p>SHEET NO. 1 OF 16</p>	

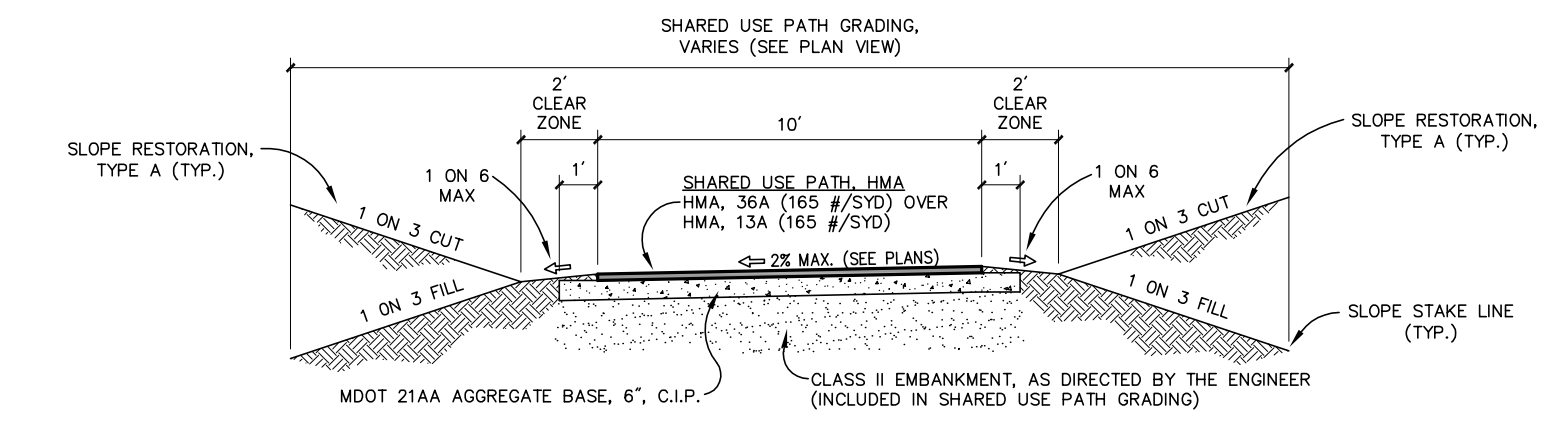
Prein & Newhof
Engineers • Surveyors • Environmental • Laboratory



**PATH CROSS SECTION
(WITH RETAINING WALL)**
SCALE : 1" = 5'

NOTES

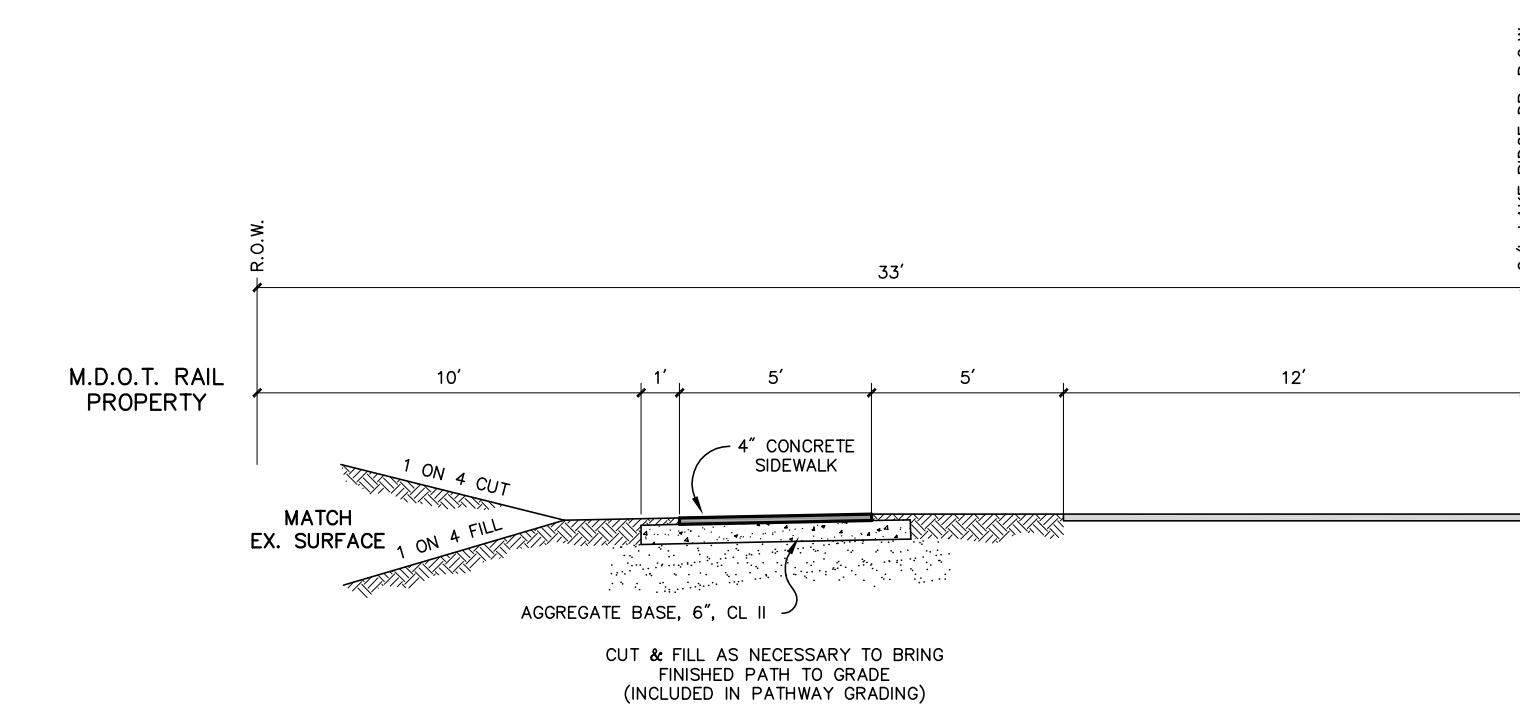
1. THE BANK UNDERDRAIN FOR THE WALLS SHALL BE OUTLETED.
2. ALL COSTS ASSOCIATED WITH THE RETAINING WALL INCLUDING BUT NOT LIMITED TO THE BANK UNDERDRAIN, UNDERDRAIN CONNECTIONS, GEOTEXTILE, DRAIN STONE, UNDERDRAIN OUTLETS, AND FOUNDATION PAD SHALL BE INCLUDED IN THE UNIT PRICES FOR THE BLOCK RETAINING WALL.
3. THE MODULAR CONC BLOCK RET WALL BLOCKS SHALL HAVE A "COBBLESTONE" PATTERN.



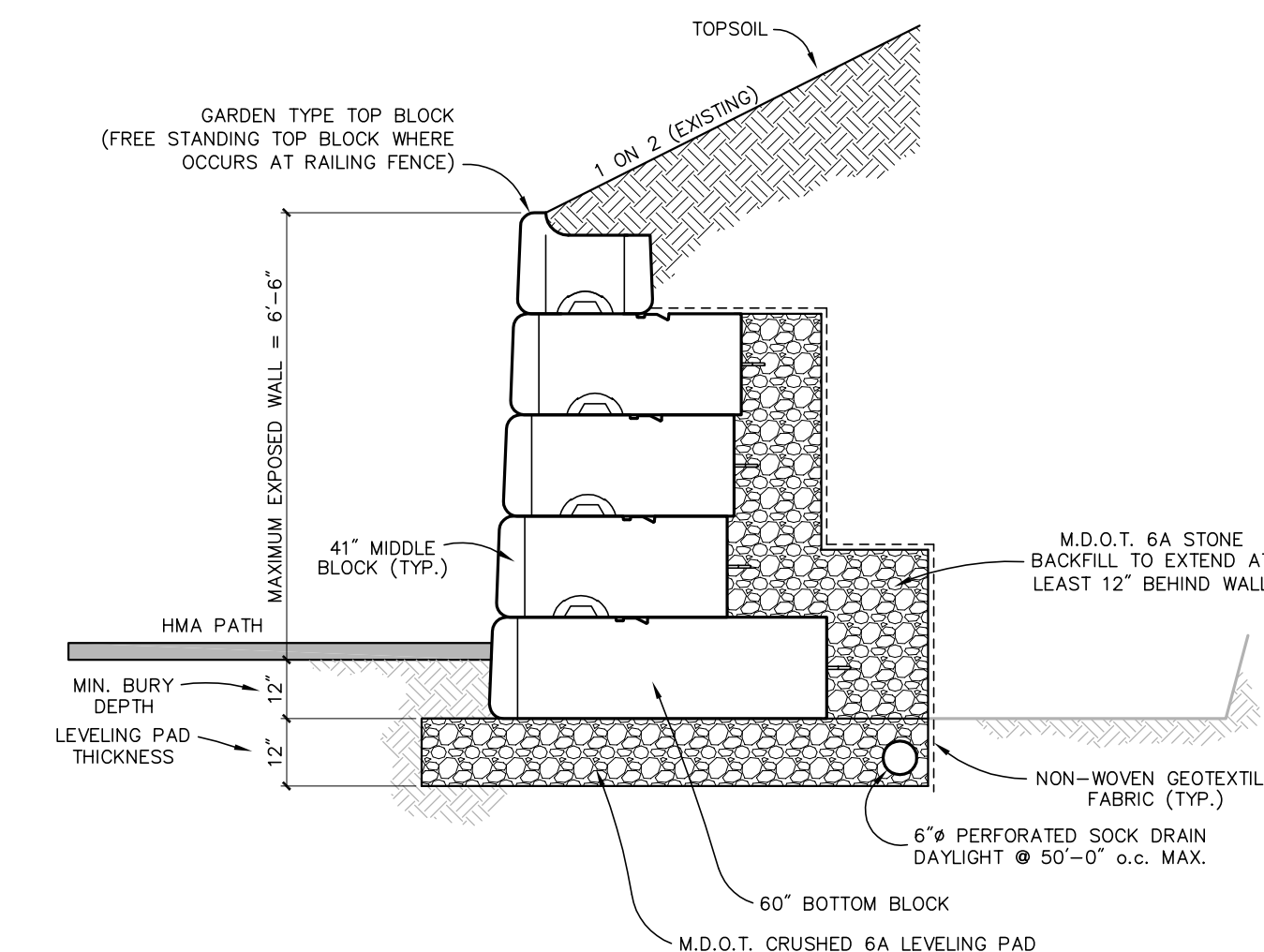
TYPICAL PATH CROSS SECTION
SCALE : 1" = 5'

NOTE

SLOPE RESTORATION TO INCLUDE SEED MIX TUF



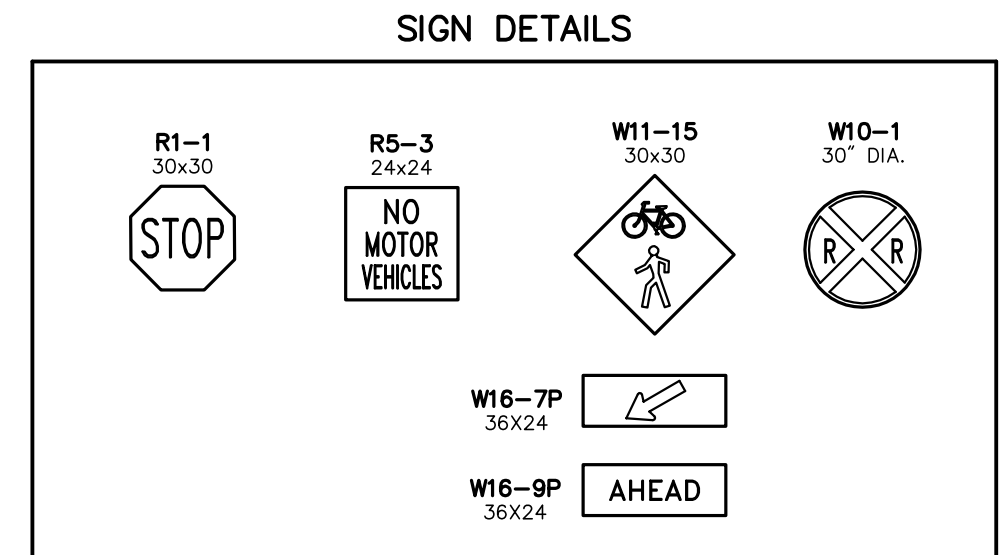
**TYPICAL HALF R.O.W. PATH CROSS SECTION
(LAKE RIDGE DRIVE)**
SCALE : 1" = 5'



TYPICAL RETAINING WALL, 6'-6" MAX.
SCALE : NONE

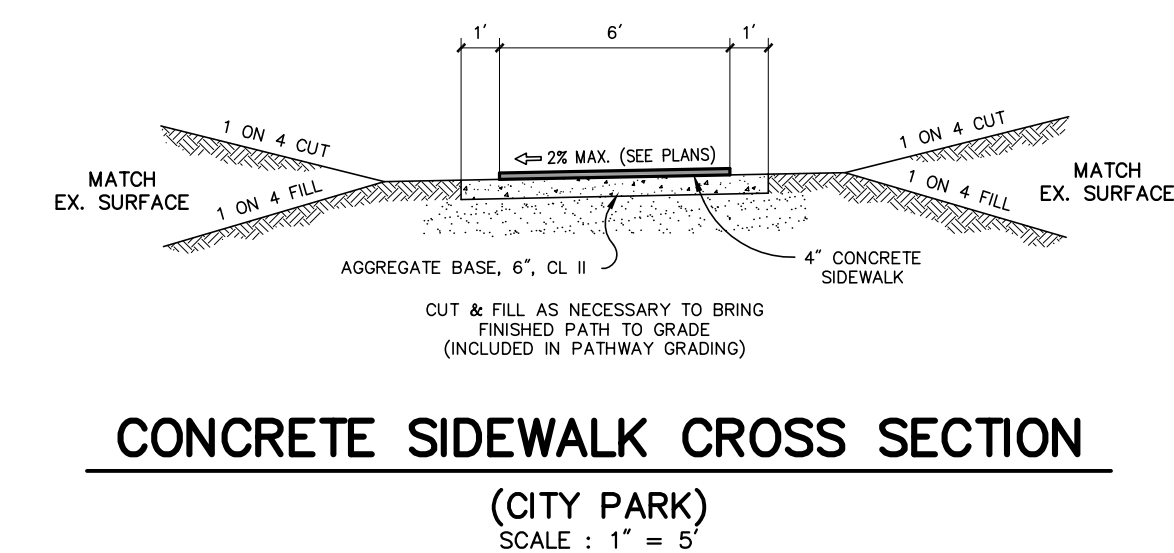
NOTES

1. THE BANK UNDERDRAIN FOR THE WALLS SHALL BE OUTLETED.
2. ALL COSTS ASSOCIATED WITH THE RETAINING WALL INCLUDING BUT NOT LIMITED TO THE BANK UNDERDRAIN, UNDERDRAIN CONNECTIONS, GEOTEXTILE, DRAIN STONE, UNDERDRAIN OUTLETS, AND FOUNDATION PAD SHALL BE INCLUDED IN THE UNIT PRICES FOR THE BLOCK RETAINING WALL.
3. THE MODULAR CONC BLOCK RET WALL BLOCKS SHALL HAVE A "COBBLESTONE" PATTERN.



LIST OF SIGNS

ITEM	DESCRIPTION	SIZE	QUANTITY	TOTAL



**CONCRETE SIDEWALK CROSS SECTION
(CITY PARK)**
SCALE : 1" = 5'

HMA APPLICATION TABLE

ITEM	RATE (PER SYD.)	PERFORMANCE GRADE	LIFT
SHARED USE PATH, HMA	165 LB	58-28	13A BASE COURSE
SHARED USE PATH, HMA	165 LB	58-28	36A TOP COARSE (AW=220 MIN)

NOTE : BOND COAT MATERIAL SHALL BE APPLIED BETWEEN SUCCESSIVE COURSES OF HMA AT A RATE OF 0.09 GALLONS PER SQUARE YARD.

T:\CADD\PROJECTS\2017\2170250_TRAVERSE_CITY_WESTBOARDMAN_LAKE_TRAIL\PROJECT\2170250_PHS_TYPES.DWG - PRIUS - Apr. 13. 2018 - 03:31pm - FredHoltz

NO.	REVISIONS	BY	DATE	DRAWN
1	ISSUED FOR CLIENT REVIEW	S.T.P.	4/18	STAFF

DATE: APR. '18
CHECKED: -
DATE: -

Prein & Newhof
Engineers • Surveyors • Environmental • Laboratory

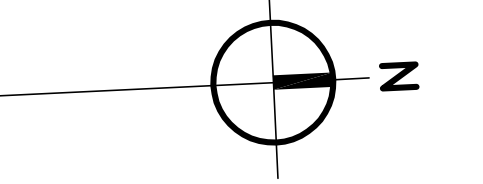
CITY OF TRAVERSE CITY
GRAND TRAVERSE COUNTY, MICHIGAN

WEST BOARDMAN LAKE TRAIL LOOP

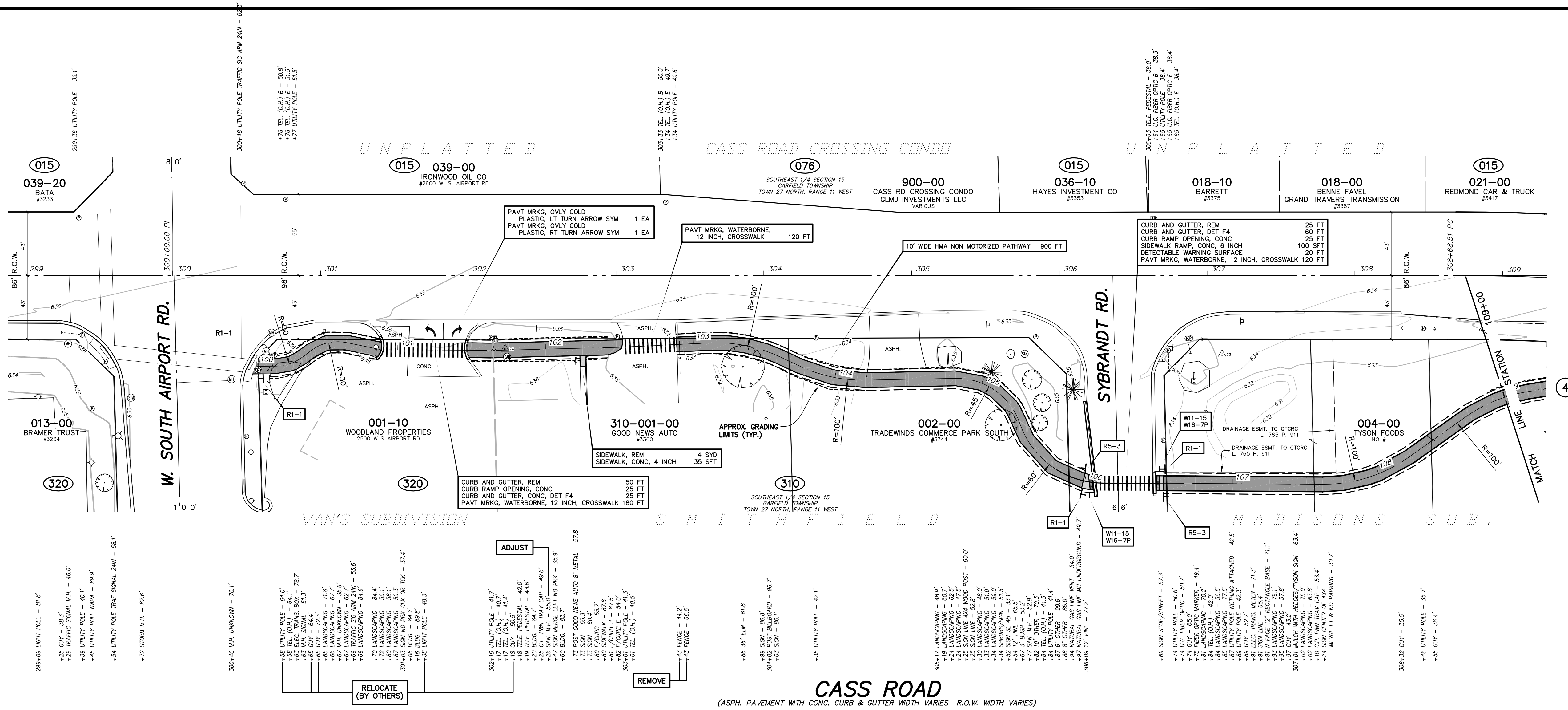
TYPICALS & DETAILS

PROJECT NO.
2170259

SHEET NO.
2 OF 16

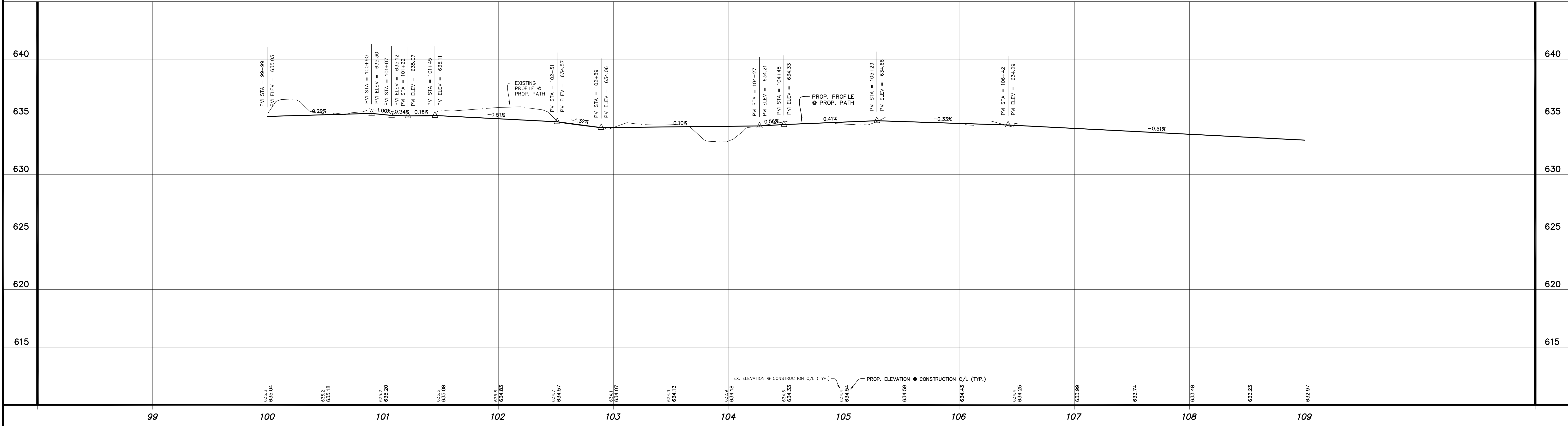


TOPOGRAPHY TEXT NOTE
 TOPOGRAPHY TEXT BASED ON
 CENTERLINE OF ROAD ALIGNMENT.
 NON MOTORIZED FACILITY
 STATIONING INDEPENDENT OF
 CENTERLINE OF ROAD STATIONING.

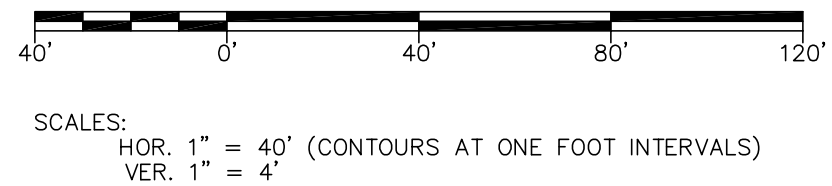


SHEET SIGN QUANTITIES
 SIGN TYPE IIA 6.75 SFT
 SIGN TYPE IIB 30 SFT
 POST, STEEL, 3 LB 105 FT

CASS ROAD
 (ASPH. PAVEMENT WITH CONC. CURB & GUTTER WIDTH VARIES R.O.W. WIDTH VARIES)



PROPERTY LINE NOTE
 PROPERTY LINES & RIGHT OF WAY LINES ARE
 APPROXIMATE. SOURCE OF PROPERTY LINES &
 RIGHT OF WAY IS GRAND TRAVERSE COUNTY
 G.I.S. VERIFY AS NECESSARY.



NO.	REVISIONS	BY	DATE	DRAWN
1	ISSUED FOR CLIENT REVIEW	S.T.P.	4/18	STAFF

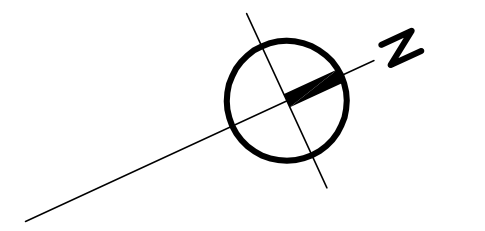
Prein & Newhof
 Engineers • Surveyors • Environmental • Laboratory

CITY OF TRAVERSE CITY
 GRAND TRAVERSE COUNTY, MICHIGAN
 WEST BOARDMAN LAKE TRAIL LOOP
CASS ROAD

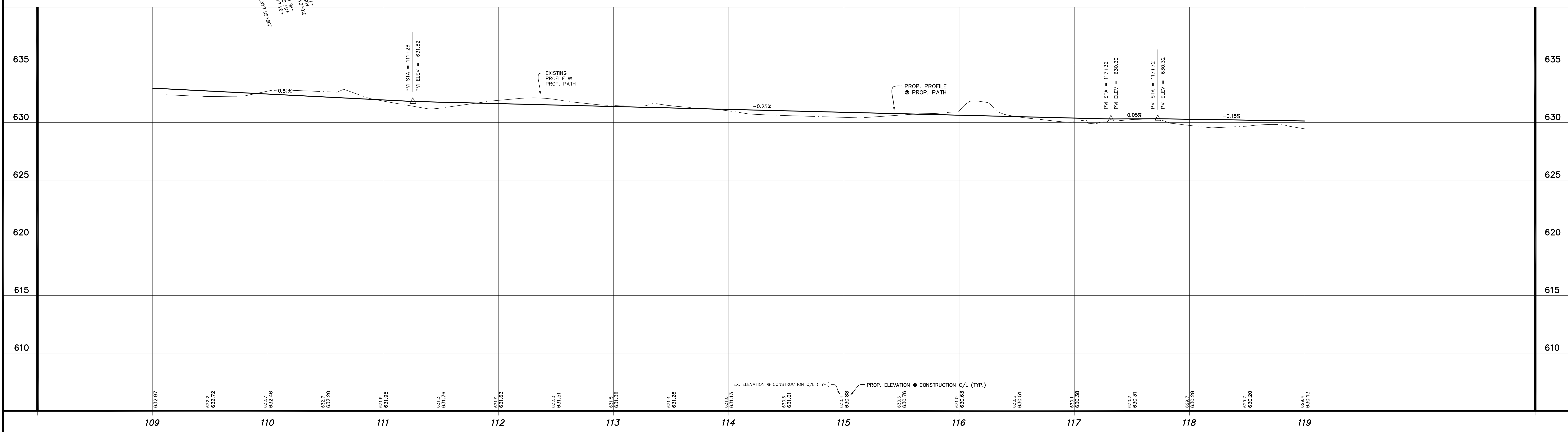
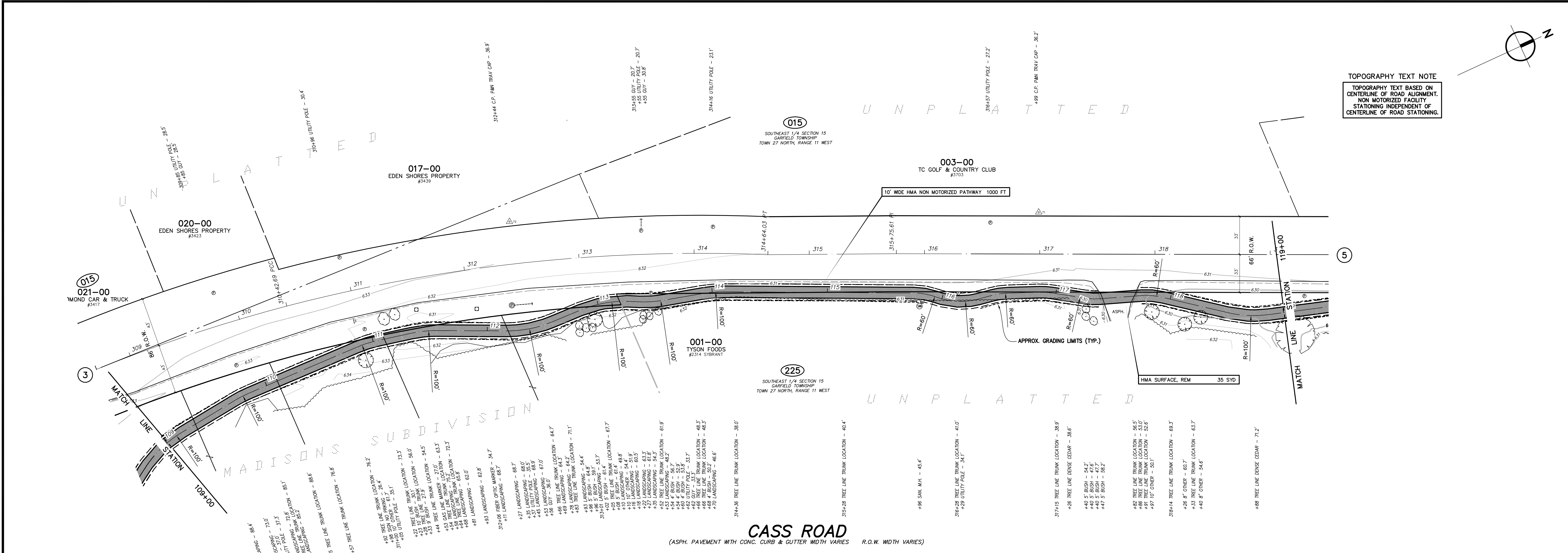
PROJECT NO.
2170259
 SHEET NO.
3 OF 16

T:\CADD\PROJECTS\2017\20259_WESTBOARDMANLAKE TRAIL LOOP\CASSING - PRELIM - APR. 11.2018 - 02.47pm - Prein\Bakelad

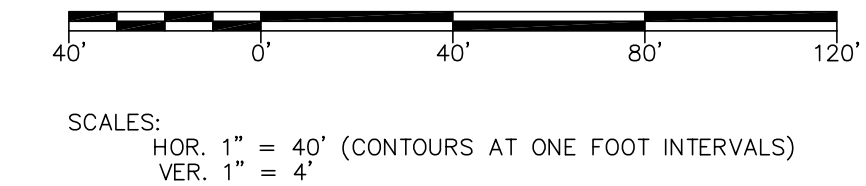
PRELIMINARY



TOPOGRAPHY TEXT NOTE
 TOPOGRAPHY TEXT BASED ON
 CENTERLINE OF ROAD ALIGNMENT.
 NON-MOTORIZED FACILITY
 STATIONING INDEPENDENT OF
 CENTERLINE OF ROAD STATIONING.



PROPERTY LINE NOTE
 PROPERTY LINES & RIGHT OF WAY LINES ARE APPROXIMATE. SOURCE OF PROPERTY LINES & RIGHT OF WAY IS GRAND TRAVERSE COUNTY G.I.S. VERIFY AS NECESSARY.



NO.	REVISIONS	BY	DATE	DRAWN
1	ISSUED FOR CLIENT REVIEW	S.T.P.	4/18	STAFF
				DATE
				DATE

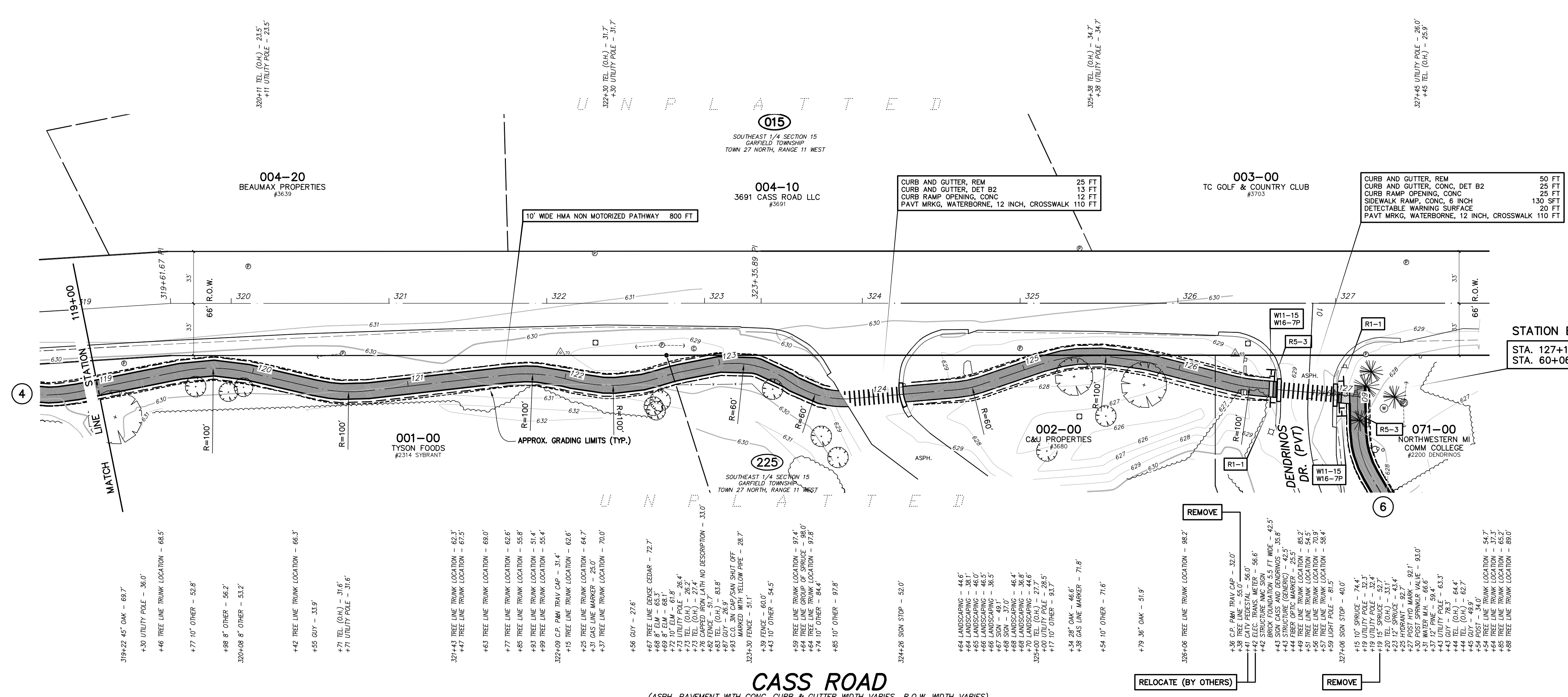
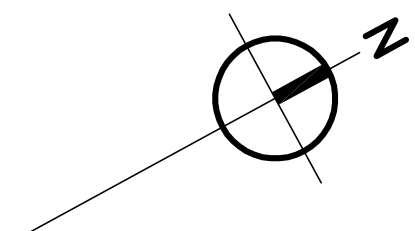
Prein & Newhof
 Engineers • Surveyors • Environmental • Laboratory

CITY OF TRAVERSE CITY
 GRAND TRAVERSE COUNTY, MICHIGAN
 WEST BOARDMAN LAKE TRAIL LOOP
CASS ROAD

PROJECT NO.
2170259
 SHEET NO.
4 OF 16

PRELIMINARY

T:\CADD\PROJECTS\2017\20259_TRAVERSE CITY - BOARDMAN LAKE TRAIL LOOP\CASSING - PREIN - APR. 13.2018 - 02.48pm - Prein\blatd

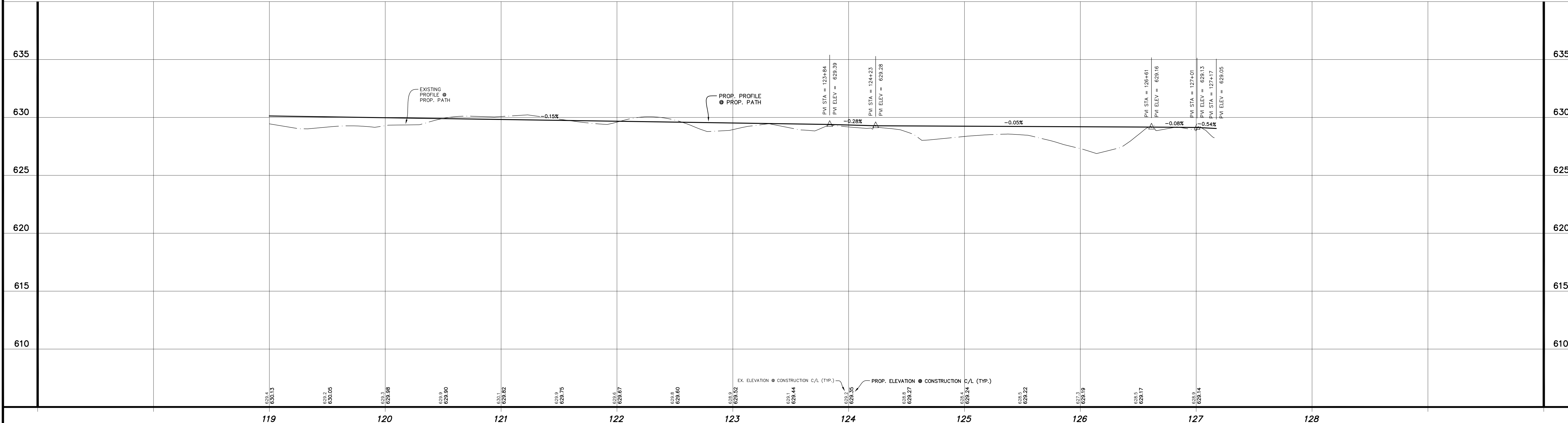


CASS ROAD
(ASPH. PAVEMENT WITH CONC. CURB & GUTTER WIDTH VARIES. R.O.W. WIDTH VARIES)

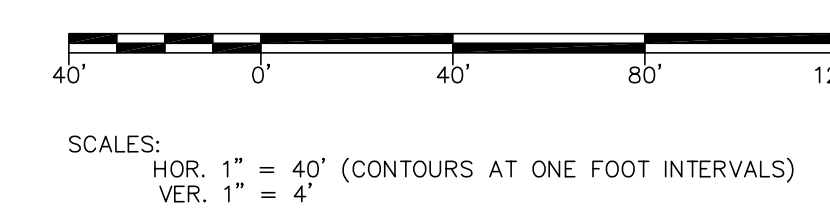
- APPROX. GRADING LIMITS (TYP.)**
- 319+22 45' OAK - 83.7'
 - +30 UTILITY POLE - 36.0'
 - +46 TREE LINE TRUNK LOCATION - 68.5'
 - +77 10' OTHER - 52.8'
 - +88 8' OTHER - 56.2'
 - 320+08 8' OTHER - 53.2'
 - +42 TREE LINE TRUNK LOCATION - 65.3'
 - +55 60' - 33.9'
 - +71 TEL (O&H) - 31.6'
 - +71 UTILITY POLE - 31.6'
 - 321+43 TREE LINE TRUNK LOCATION - 62.3'
 - +47 TREE LINE TRUNK LOCATION - 67.5'
 - +63 TREE LINE TRUNK LOCATION - 68.0'
 - +77 TREE LINE TRUNK LOCATION - 62.6'
 - +85 TREE LINE TRUNK LOCATION - 55.8'
 - +93 TREE LINE TRUNK LOCATION - 51.4'
 - +99 TREE LINE TRUNK LOCATION - 55.4'
 - 322+09 6.0' PARK TRUNK CAP - 31.4'
 - +15 TREE LINE TRUNK LOCATION - 62.6'
 - +20 TREE LINE TRUNK LOCATION - 64.7'
 - +37 TREE LINE TRUNK LOCATION - 70.0'
 - +56 60' - 27.6'
 - +67 TREE LINE DENSE CEDAR - 72.7'
 - +68 8' ELM - 65.3'
 - +72 10' ELM - 61.8'
 - +73 TEL (O&H) - 26.9'
 - +73 TEL (O&H) - 27.4'
 - +82 FENCE - 51.1'
 - +82 FENCE - 51.1'
 - +83 TEL (O&H) - 63.8'
 - +93 C.O. SW CAP/SAM SHUT OFF
 - 323+30 FENCE - 51.1'
 - +43 10' OTHER - 54.5'
 - +59 TREE LINE TRUNK LOCATION - 97.4'
 - +64 TREE LINE GROUP OF SPRUCE - 98.0'
 - +74 10' OTHER - 84.4'
 - +85 10' OTHER - 97.8'
 - 324+26 SIGN STOP - 52.0'
 - +64 LANDSCAPING - 44.6'
 - +64 LANDSCAPING - 38.1'
 - +65 LANDSCAPING - 46.5'
 - +66 LANDSCAPING - 36.5'
 - +68 SIGN - 32.0'
 - +68 SIGN - 32.0'
 - +68 LANDSCAPING - 36.8'
 - +70 LANDSCAPING - 44.6'
 - +70 UTILITY POLE - 28.5'
 - +77 10' OTHER - 91.7'
 - +34 38' OAK - 46.6'
 - +38 645' LINE MARKER - 71.8'
 - +54 10' OTHER - 71.6'
 - +79 38' OAK - 51.9'
 - 328+08 TREE LINE TRUNK LOCATION - 98.2'
 - +36 C.P. PARK TRUNK CAP - 32.0'
 - +41 UTILITY PRECASTAL - 56.0'
 - +42 ELEC. TRANS. METER - 56.6'
 - +43 BRICK FOUNDATION 5.5' FT. WIDE - 42.5'
 - +43 SIGN/CLUSE FOUNDATION - 52.2'
 - +44 FIBER OPTIC MARKER - 25.2'
 - +45 TREE LINE TRUNK LOCATION - 54.5'
 - +45 TREE LINE TRUNK LOCATION - 70.9'
 - +59 LIGHT POLE - 81.5'
 - +59 LIGHT POLE - 58.4'
 - 327+06 SIGN STOP - 40.0'
 - +15 10' SPRUCE - 74.4'
 - +19 UTILITY POLE - 32.3'
 - +19 15' SPRUCE - 52.7'
 - +20 TEL (O&H) - 33.1'
 - +25 HYDRANT - 82.7'
 - +27 105' FIBER MARKER - 82.7'
 - +31 WATER M.H. - 66.6'
 - +43 UTILITY POLE - 63.3'
 - +43 60' - 78.3'
 - +44 TEL (O&H) - 62.7'
 - +45 60' - 49.9'
 - +54 TREE LINE TRUNK LOCATION - 54.7'
 - +64 TREE LINE TRUNK LOCATION - 32.3'
 - +88 TREE LINE TRUNK LOCATION - 88.0'

SHEET SIGN QUANTITIES

SIGN, TYPE IIIA	4.5 SFT
SIGN, TYPE IIIB	30 SFT
POST, STEEL, 3 LB	90 FT



PROPERTY LINE NOTE
PROPERTY LINES & RIGHT OF WAY LINES ARE APPROXIMATE. SOURCE OF PROPERTY LINES & RIGHT OF WAY IS GRAND TRAVERSE COUNTY G.I.S. VERIFY AS NECESSARY.



NO.	REVISIONS	BY	DATE	DRAWN
1	ISSUED FOR CLIENT REVIEW	S.T.P.	4/18	STAFF

Prein & Newhof
Engineers • Surveyors • Environmental • Laboratory

CITY OF TRAVERSE CITY
GRAND TRAVERSE COUNTY, MICHIGAN

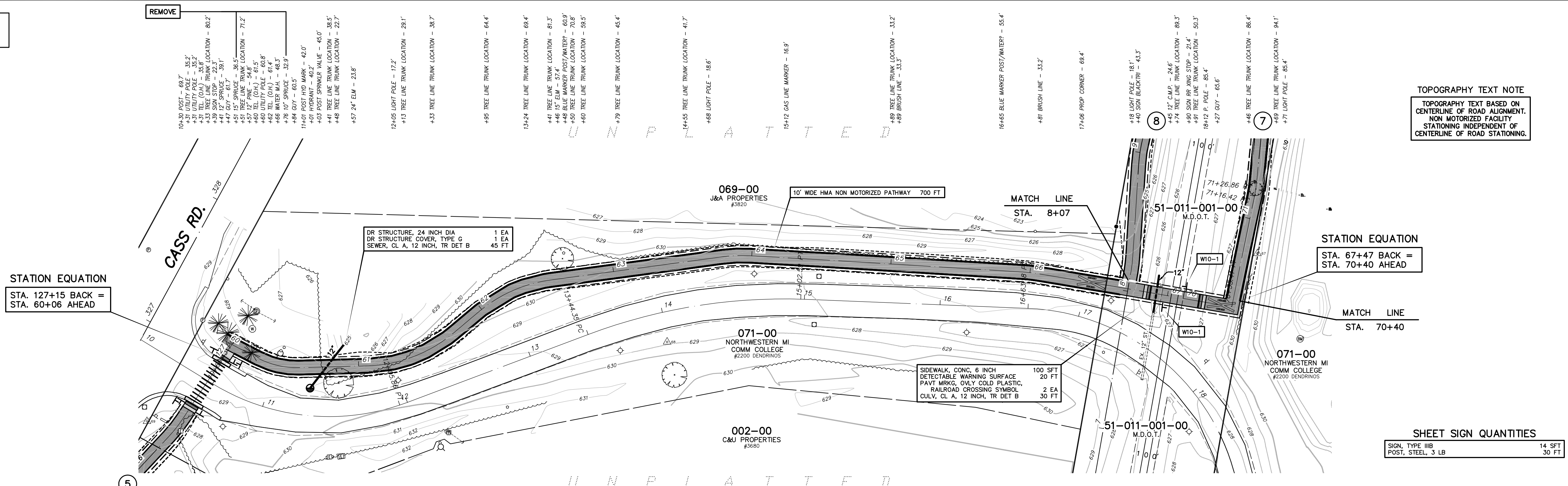
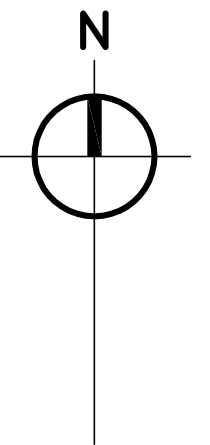
WEST BOARDMAN LAKE TRAIL LOOP
CASS ROAD

PROJECT NO. 2170259
SHEET NO. 5 OF 16

T:\CADD\PROJECTS\2017\2170259_TRAVERSE CITY - BOARDMAN LAKE TRAIL LOOP\PROFILES\PHL_PRR_CASSING - PRRIS - Apr. 13. 2018 - 01.00pm - Priedel.dwg

PRELIMINARY

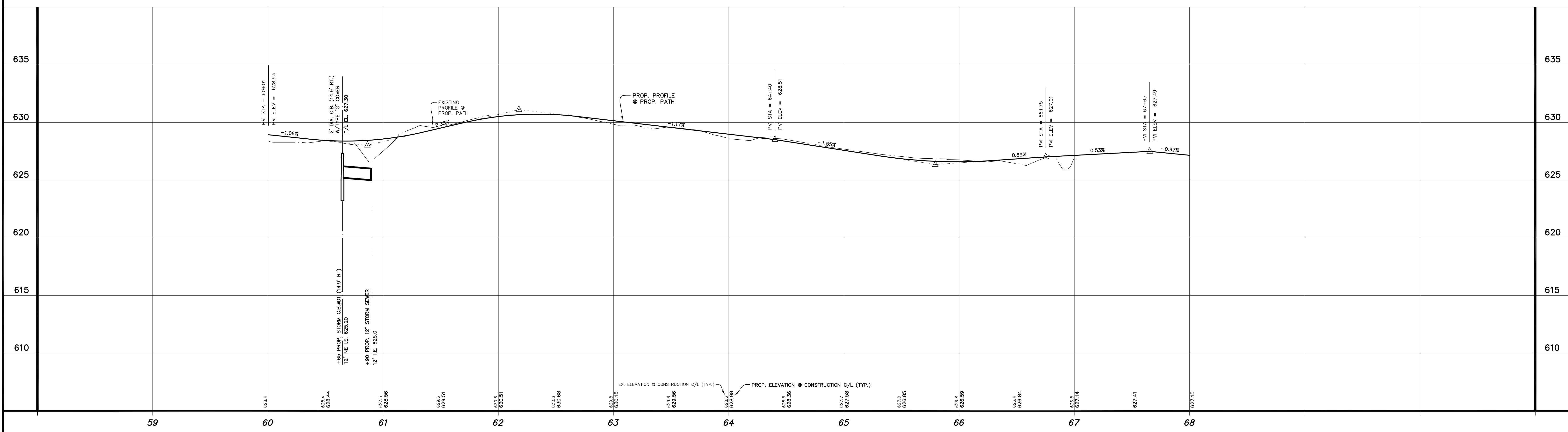
B.M. XXX
EL. XXX



TOPOGRAPHY TEXT NOTE
TOPOGRAPHY TEXT BASED ON CENTERLINE OF ROAD ALIGNMENT. NON-MOTORIZED FACILITY STATIONING INDEPENDENT OF CENTERLINE OF ROAD STATIONING.

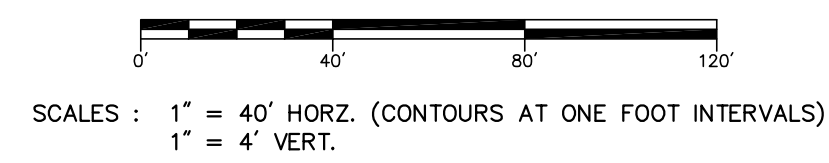
SHEET SIGN QUANTITIES
SIGN, TYPE IIIB 14 SFT
POST, STEEL, 3 LB 30 FT

DENDRINOS DRIVE
(PRIVATE PROPERTY ASPHALT PAVEMENT WIDTH VARIES)



811
UTILITY LOCATIONS ARE DERIVED FROM ACTUAL MEASUREMENTS OR AVAILABLE RECORDS. THEY SHOULD NOT BE INTERPRETED TO BE EXACT LOCATIONS NOR SHOULD IT BE ASSUMED THAT THEY ARE THE ONLY UTILITIES IN THIS AREA.
Know what's below.
Call before you dig.

PROJECT DATUM INFORMATION
COORDINATE SYSTEM: STATE PLANE GRID
LINE ELLIPSOID: MICHIGAN Spheroid 2113
HORIZONTAL DATUM: NAD 83 (2011)
VERTICAL DATUM: NAVD 83
GEOID: GEOID 12
UNITS: INTERNATIONAL FEET
PROJECT COMBINED SCALE FACTOR (2011) = ORIGINAL DISTANCE x GRID DISTANCE / TRUE DISTANCE



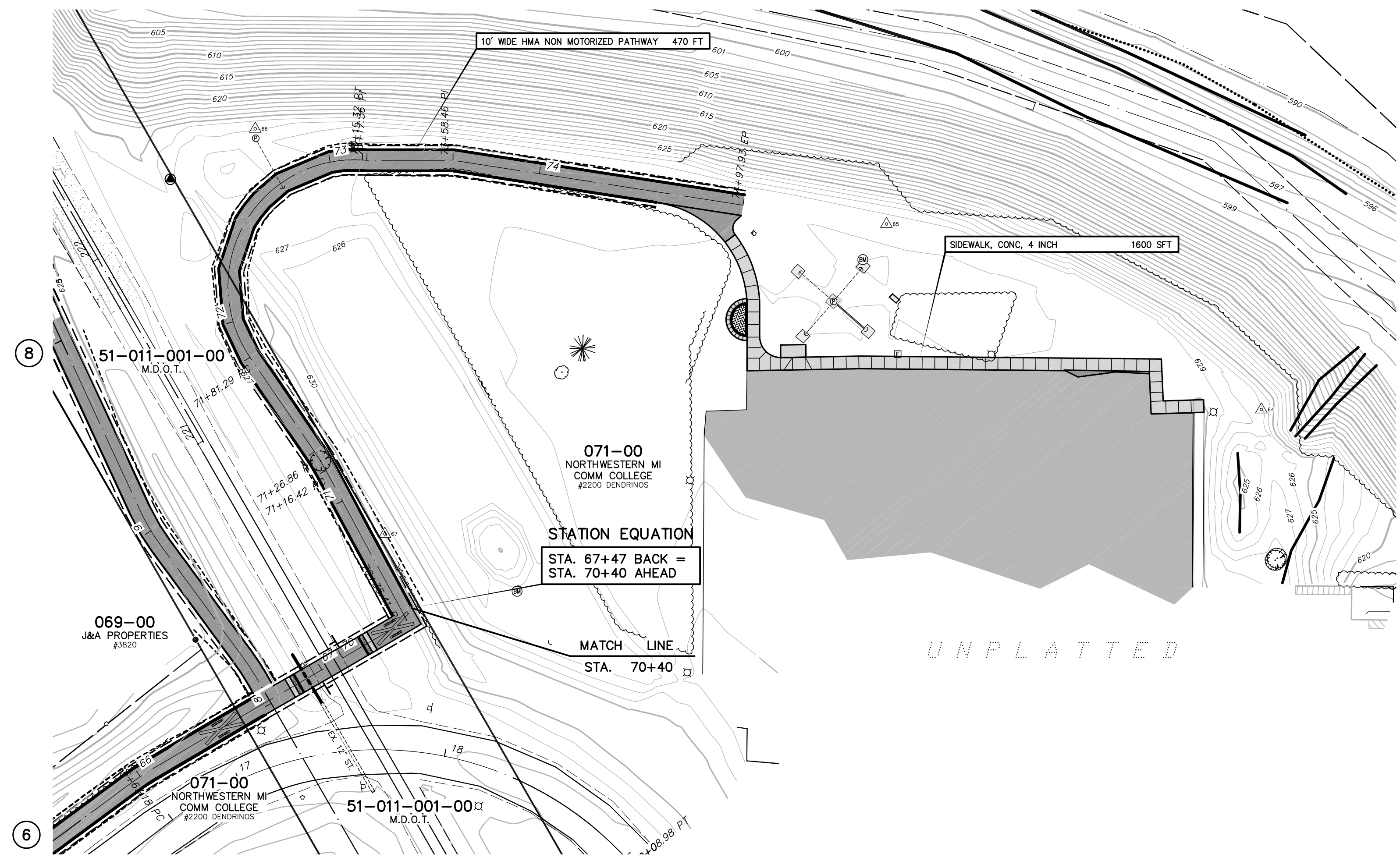
NO.	REVISIONS	BY	DATE	DRAWN
1	ISSUED FOR CLIENT REVIEW	S.T.P.	4/18	STAFF
				DATE
				CHECKED
				DATE

Prein & Newhof
Engineers • Surveyors • Environmental • Laboratory

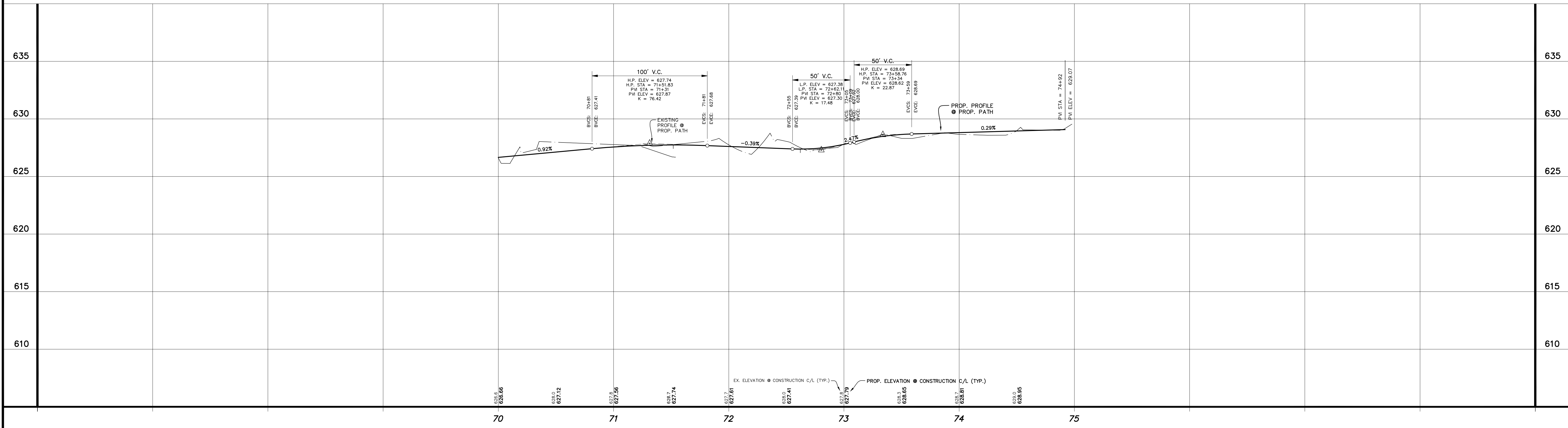
CITY OF TRAVERSE CITY
GRAND TRAVERSE COUNTY, MICHIGAN
WEST BOARDMAN LAKE TRAIL LOOP
DENDRINOS DRIVE

PROJECT NO. 2170259
SHEET NO. 6 OF 16

B.M. XXX EL. XXX

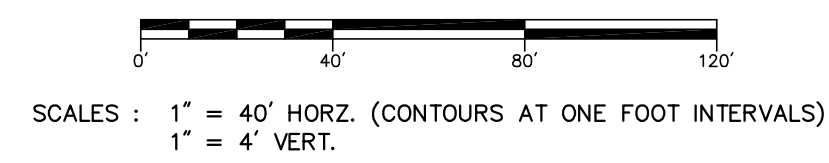


TRAIL SPUR
(IN MDOT RR R.O.W. & NORTHWESTERN MICHIGAN COMMUNITY COLLEGE)



811
Know what's below.
Call before you dig.

PROJECT DATUM INFORMATION
COORDINATE SYSTEM : STATE PLANE GRID
ZONE : MICHIGAN SOUTH 2113
ELLIPSOID : GRS 80
HORIZONTAL DATUM : NAD 83 (2011)
VERTICAL DATUM : NAVD 83
GEOID : GEOID 12
UNITS : INTERNATIONAL FEET
PROJECT COMBINED SCALE FACTOR (PCS) =
GROUND DISTANCE x GRID DISTANCE / PAPER



NO.	REVISIONS	BY	DATE	DRAWN
1	ISSUED FOR CLIENT REVIEW	S.T.P.	4/18	STAFF

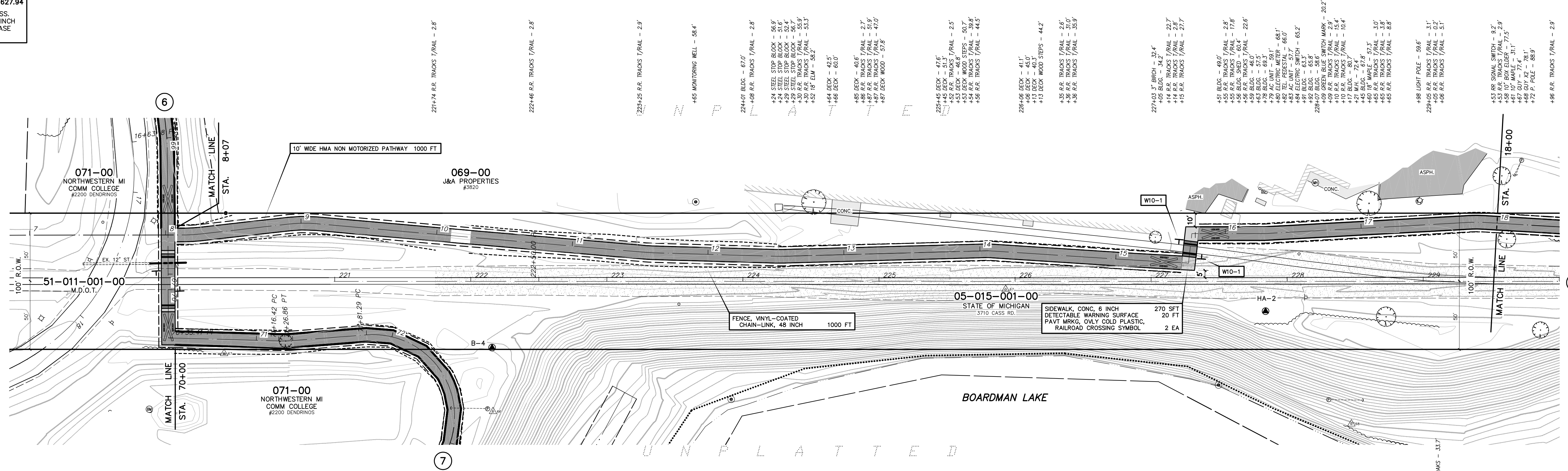
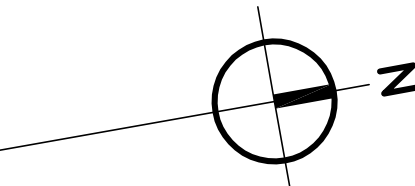
Prein & Newhof
Engineers • Surveyors • Environmental • Laboratory

CITY OF TRAVERSE CITY
GRAND TRAVERSE COUNTY, MICHIGAN
**WEST BOARDMAN LAKE TRAIL LOOP
TRAIL SPUR**

PROJECT NO.
2170259
SHEET NO.
7 OF 16

T:\CADD\PROJECTS\2017\2170259_TRAVERSE CITY_W BOARDMAN LAKE TRAIL_V_PROD\PHASE1\2170259_P1_P1R_SPLDIMS - IPRIUS - Apr. 13, 2018 - 03:15pm - PrintSheet.dwg

BENCHMARK EL. 627.94
 NORTH PARKING LOT OF 3886 CASS.
 "±" MARK TOP OF EAST SIDE 24 INCH
 CONCRETE SQUARE LIGHT POLE BASE
 (0.5" A/G)

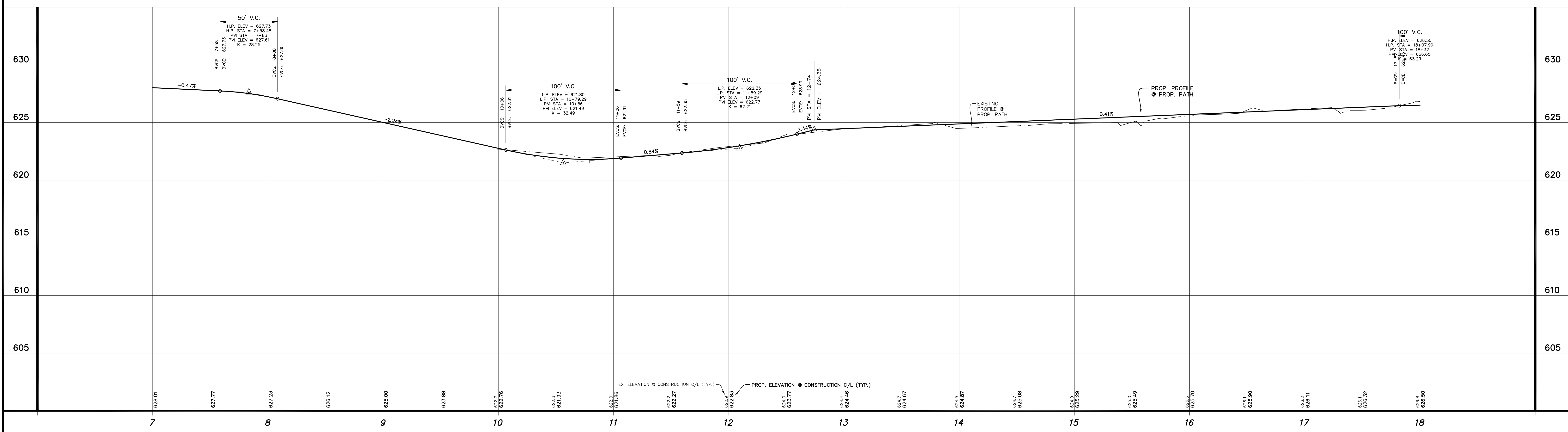


TOPOGRAPHY TEXT NOTE
 TOPOGRAPHY TEXT BASED ON
 CENTERLINE OF ROAD ALIGNMENT.
 NON-MOTORIZED FACILITY
 STATIONING INDEPENDENT OF
 CENTERLINE OF ROAD STATIONING.

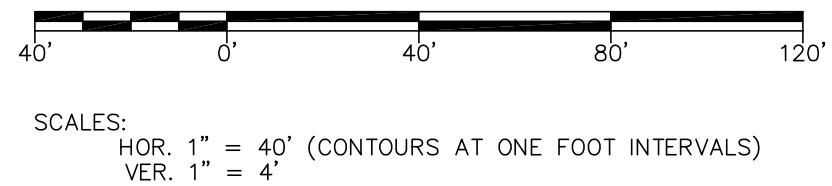
M.D.O.T. R.R. R.O.W.
 (100' WIDE R.O.W.)

SHEET SIGN QUANTITIES

SIGN, TYPE III B	14 SFT
POST, STEEL, 3 LB	30 FT



PROPERTY LINE NOTE
 PROPERTY LINES & RIGHT OF WAY LINES ARE
 APPROXIMATE. SOURCE OF PROPERTY LINES &
 RIGHT OF WAY IS GRAND TRAVERSE COUNTY
 G.I.S. VERIFY AS NECESSARY.



NO.	REVISIONS	BY	DATE	DRAWN
1	ISSUED FOR CLIENT REVIEW	S.T.P.	4/18	STAFF

Prein & Newhof
 Engineers • Surveyors • Environmental • Laboratory

CITY OF TRAVERSE CITY GRAND TRAVERSE COUNTY, MICHIGAN	PROJECT NO. 2170259
WEST BOARDMAN LAKE TRAIL LOOP M.D.O.T. R.R. R.O.W.	SHEET NO. 8 OF 16

PRELIMINARY